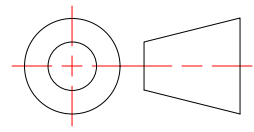


Created By: AMH	Approved By: AMH	Sheet Size A	Sheet No. 1/4
Creation Date: 2/17/2023	Approval Date: 2/17/2023	Scale 1:1	Rev



MFSSHD Assembly
 Clip and Continuous Rail, Compatible with #8 Fasteners,
 3/4" Lift-Off
 Weight: 4.622 lbmass
 Finish: Mill

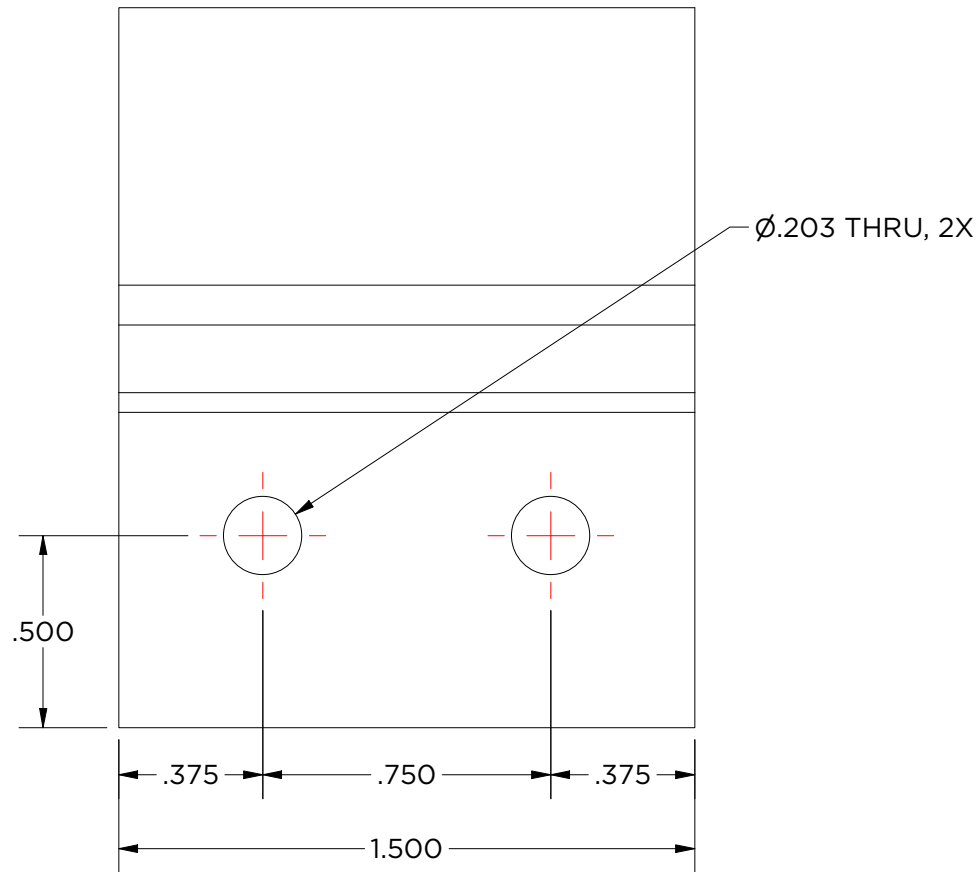
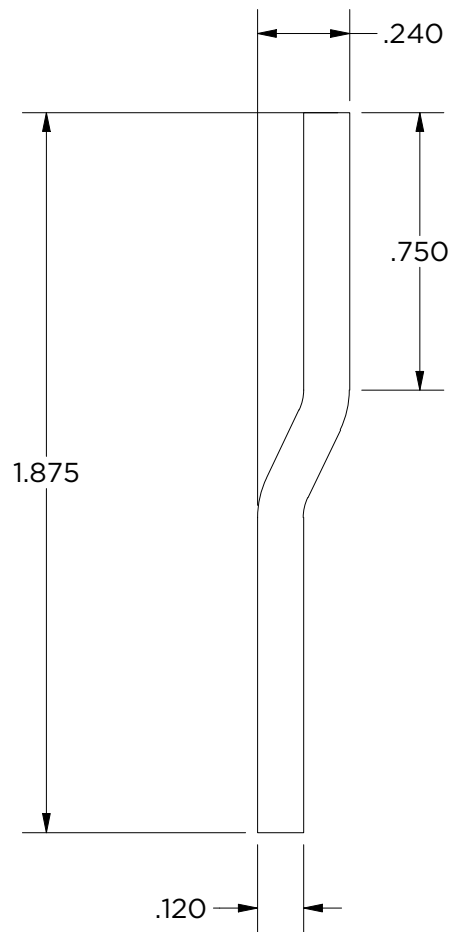


MONARCH
METAL INC.

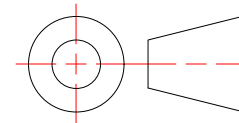
PROPRIETARY AND CONFIDENTIAL
 THE INFORMATION CONTAINED IN THIS DRAWING IS THE SOLE PROPERTY OF
 MONARCH METAL FABRICATION. ANY REPRODUCTION IN PART OR AS A WHOLE
 WITHOUT THE WRITTEN PERMISSION OF MONARCH METAL INC. IS PROHIBITED.

New York 1700 Ocean Ave Suite 2 Ronkonkoma NY 11779 Phone: (631) 750-3000
Nevada 1080 Linda Way, Unit 10 Sparks, NV 89431 Phone: (775) 415-0100
Texas 1330 Post & Paddock St., Suite 800 Grand Prairie, TX 75050 (945) 202-2700

monarchmetal.com



Created By: AMH	Approved By: AMH	Sheet Size A	Sheet No. 2/4
Creation Date: 2/17/2023	Approval Date: 2/17/2023	Scale 2 : 1	Rev



MFSSHD-1.5

Weight: 0.097 lbmass
 Stainless Steel
 Finish: 304 SS



MONARCH
 METAL INC.

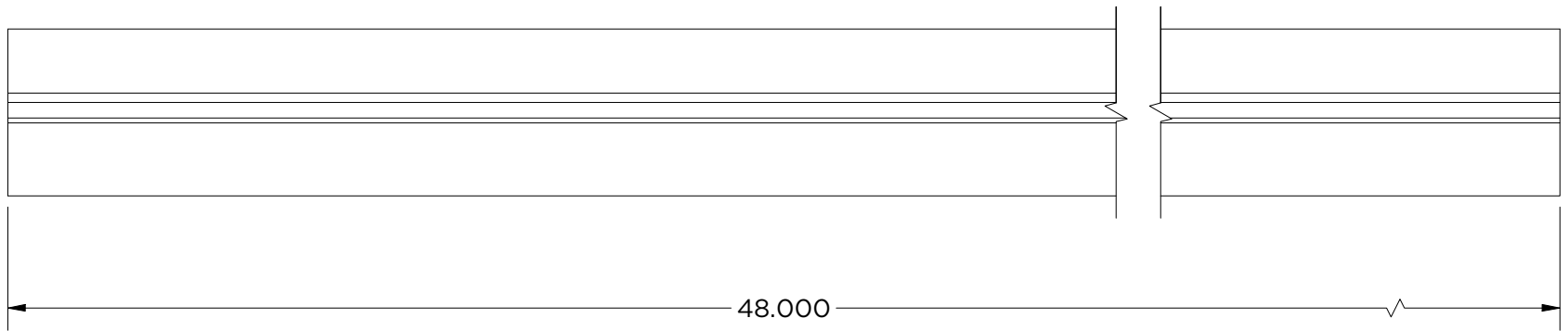
PROPRIETARY AND CONFIDENTIAL
 THE INFORMATION CONTAINED IN THIS DRAWING IS THE SOLE PROPERTY OF MONARCH METAL FABRICATION. ANY REPRODUCTION IN PART OR AS A WHOLE WITHOUT THE WRITTEN PERMISSION OF MONARCH METAL INC. IS PROHIBITED.

New York
 1700 Ocean Ave Suite 2
 Ronkonkoma NY 11779
 Phone: (631) 750-3000

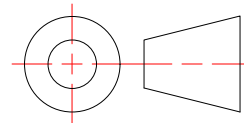
Nevada
 1080 Linda Way, Unit 10
 Sparks, NV 89431
 Phone: (775) 415-0100

Texas
 1330 Post & Paddock St.,
 Suite 800
 Grand Prairie, TX 75050
 (945) 202-2700

monarchmetal.com



Created By: AMH	Approved By: AMH	Sheet Size A	Sheet No. 3/4
Creation Date: 2/17/2023	Approval Date: 2/17/2023	Scale 1:1	Rev



MFSSHD-48

Weight: 3.162 lbmass
Stainless Steel
Finish: 304 SS



MONARCH
METAL INC.

PROPRIETARY AND CONFIDENTIAL

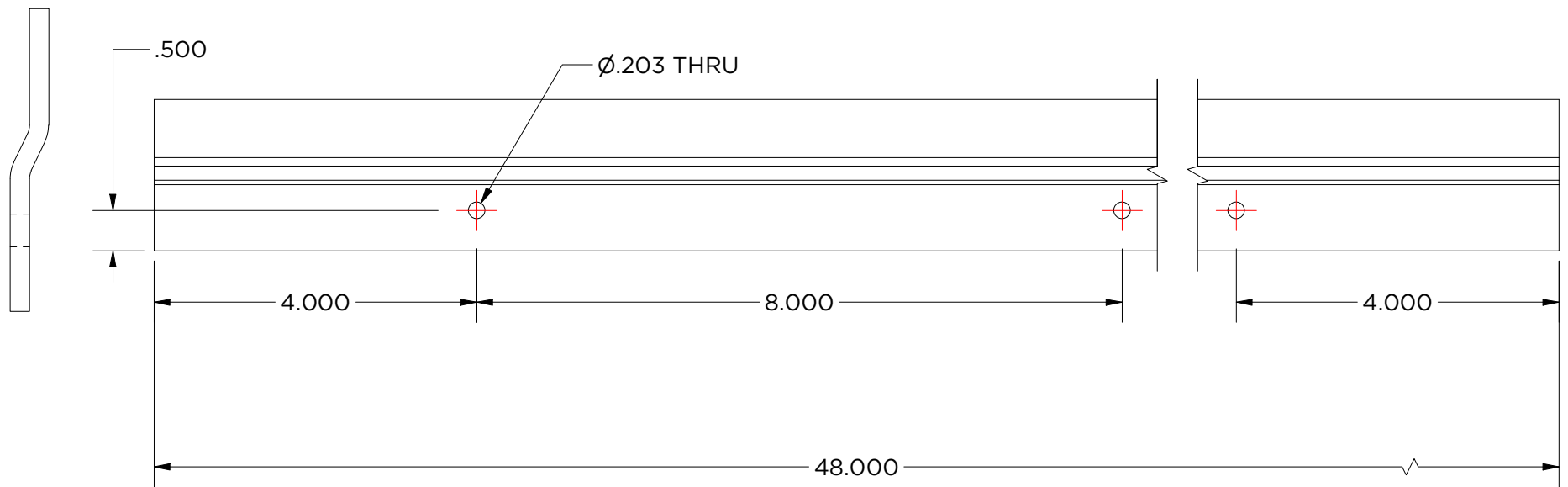
THE INFORMATION CONTAINED IN THIS DRAWING IS THE SOLE PROPERTY OF MONARCH METAL FABRICATION. ANY REPRODUCTION IN PART OR AS A WHOLE WITHOUT THE WRITTEN PERMISSION OF MONARCH METAL INC. IS PROHIBITED.

New York
1700 Ocean Ave Suite 2
Ronkonkoma NY 11779
Phone: (631) 750-3000

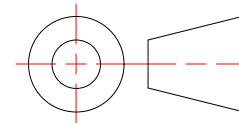
Nevada
1080 Linda Way, Unit 10
Sparks, NV 89431
Phone: (775) 415-0100

Texas
1330 Post & Paddock St.,
Suite 800
Grand Prairie, TX 75050
(945) 202-2700

monarchmetal.com



Created By: AMH	Approved By: AMH	Sheet Size A	Sheet No. 4/4
Creation Date: 2/17/2023	Approval Date: 2/17/2023	Scale 1:1	Rev



MFSSHD-48H8

Weight: 3.155 lbmass
Stainless Steel
Finish: 304 SS



MONARCH
METAL INC.

PROPRIETARY AND CONFIDENTIAL

THE INFORMATION CONTAINED IN THIS DRAWING IS THE SOLE PROPERTY OF MONARCH METAL FABRICATION. ANY REPRODUCTION IN PART OR AS A WHOLE WITHOUT THE WRITTEN PERMISSION OF MONARCH METAL INC. IS PROHIBITED.

New York
1700 Ocean Ave Suite 2
Ronkonkoma NY 11779
Phone: (631) 750-3000

Nevada
1080 Linda Way, Unit 10
Sparks, NV 89431
Phone: (775) 415-0100

Texas
1330 Post & Paddock St.,
Suite 800
Grand Prairie, TX 75050
(945) 202-2700

monarchmetal.com