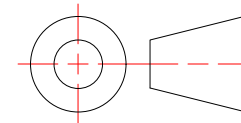


<b>Created By:</b> AMH	<b>Approved By:</b>	<b>Sheet Size</b> A	<b>Sheet No.</b> 1/8
<b>Creation Date:</b> 10/15/2025	<b>Approval Date:</b>	<b>Scale</b> 1:1	<b>Rev</b> 2



**MF625 Assembly**

Typical MF625 Installation, (1) MF625 Wall Rail, (1) MF625 Clip Shown

Weight: 2.531 lbmass

Finish: Mill



**MONARCH**  
METAL INC.

**PROPRIETARY AND CONFIDENTIAL**

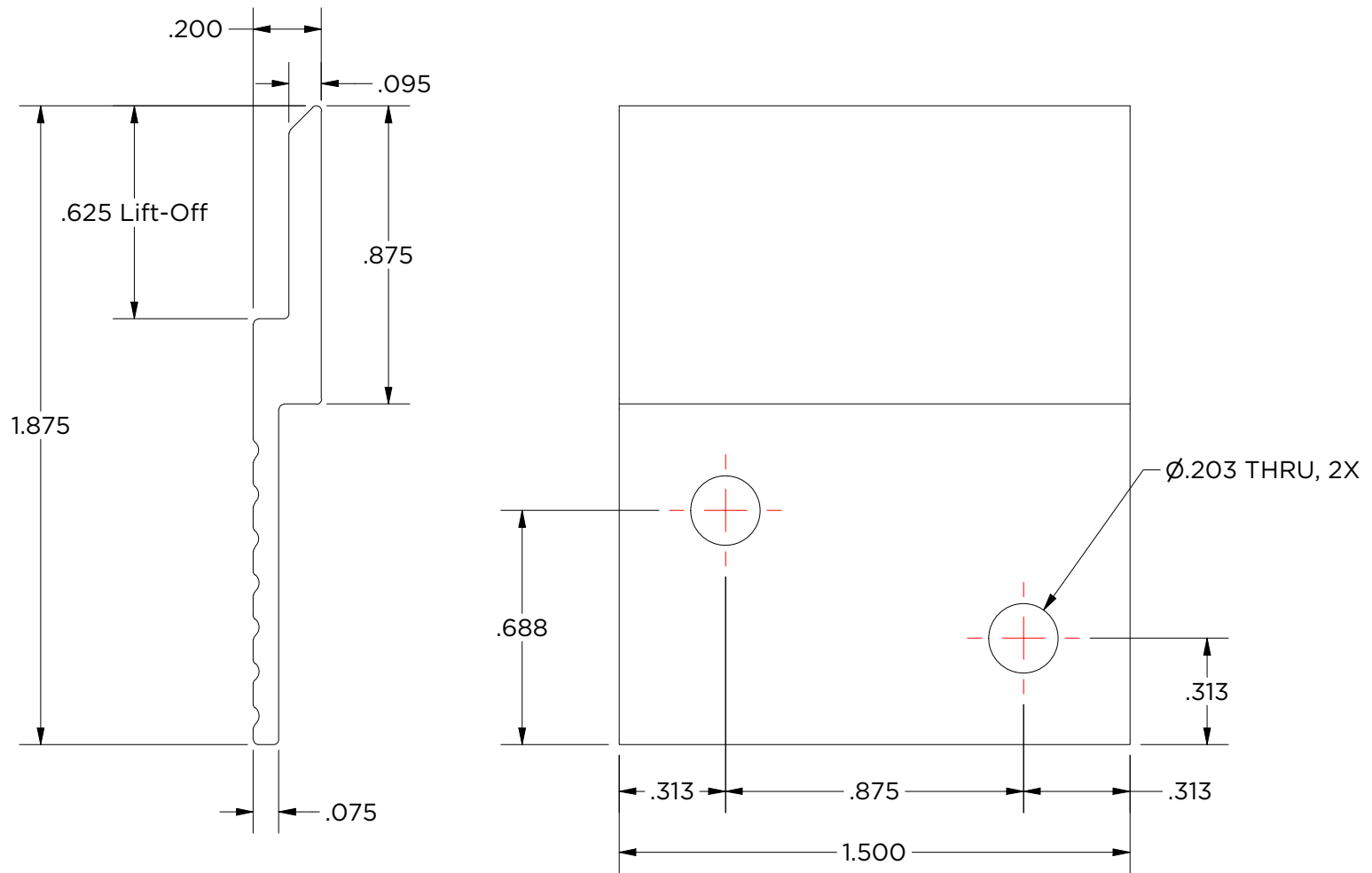
THE INFORMATION CONTAINED IN THIS DRAWING IS THE SOLE PROPERTY OF MONARCH METAL FABRICATION. ANY REPRODUCTION IN PART OR AS A WHOLE WITHOUT THE WRITTEN PERMISSION OF MONARCH METAL INC. IS PROHIBITED.

**New York**  
1700 Ocean Ave Suite 2  
Ronkonkoma NY 11779  
Phone: (631) 750-3000

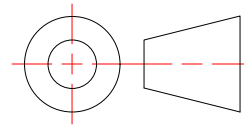
**Nevada**  
1080 Linda Way, Unit 10  
Sparks, NV 89431  
Phone: (775) 415-0100

**Texas**  
1330 Post & Paddock St.,  
Suite 800  
Grand Prairie, TX 75050  
(945) 202-2700

monarchmetal.com



<b>Created By:</b> AMH	<b>Approved By:</b>	<b>Sheet Size</b> A	<b>Sheet No.</b> 2/8
<b>Creation Date:</b> 10/15/2025	<b>Approval Date:</b>	<b>Scale</b> 2 : 1	<b>Rev</b> 2



**MF625-1.5**

Weight: 0.025 lbmass  
Aluminum 6063  
Finish: Mill



**MONARCH**  
METAL INC.

**PROPRIETARY AND CONFIDENTIAL**

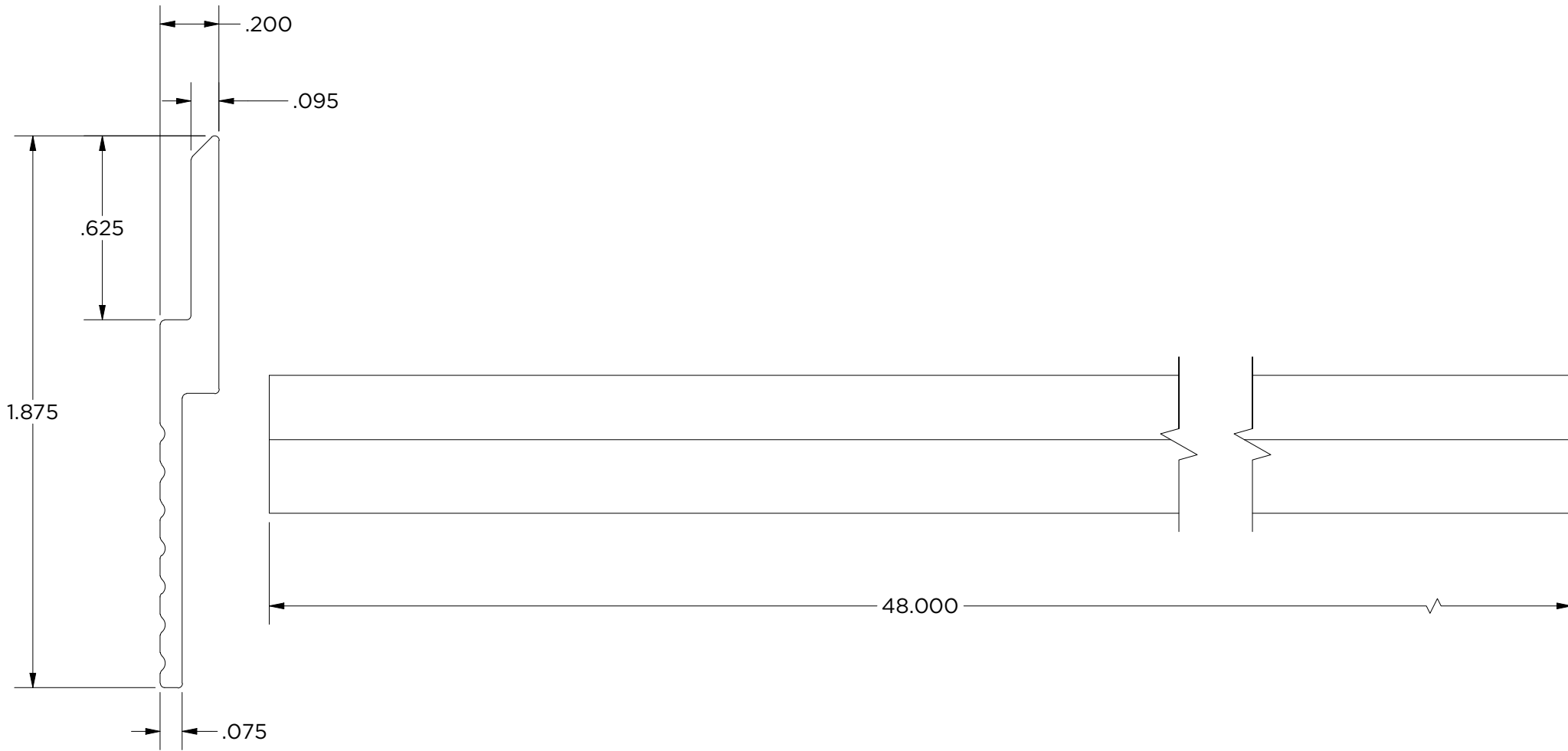
THE INFORMATION CONTAINED IN THIS DRAWING IS THE SOLE PROPERTY OF MONARCH METAL FABRICATION. ANY REPRODUCTION IN PART OR AS A WHOLE WITHOUT THE WRITTEN PERMISSION OF MONARCH METAL INC. IS PROHIBITED.

**New York**  
1700 Ocean Ave Suite 2  
Ronkonkoma NY 11779  
Phone: (631) 750-3000

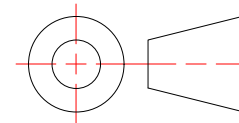
**Nevada**  
1080 Linda Way, Unit 10  
Sparks, NV 89431  
Phone: (775) 415-0100

**Texas**  
1330 Post & Paddock St.,  
Suite 800  
Grand Prairie, TX 75050  
(945) 202-2700

monarchmetal.com



<b>Created By:</b> AMH	<b>Approved By:</b>	<b>Sheet Size</b> A	<b>Sheet No.</b> 3/8
<b>Creation Date:</b> 10/15/2025	<b>Approval Date:</b>	<b>Scale</b> 2 : 1	<b>Rev</b> 2



**MF625-48**

Weight: 0.828 lbmass  
Aluminum 6063  
Finish: Mill



**MONARCH**  
METAL INC.

**PROPRIETARY AND CONFIDENTIAL**

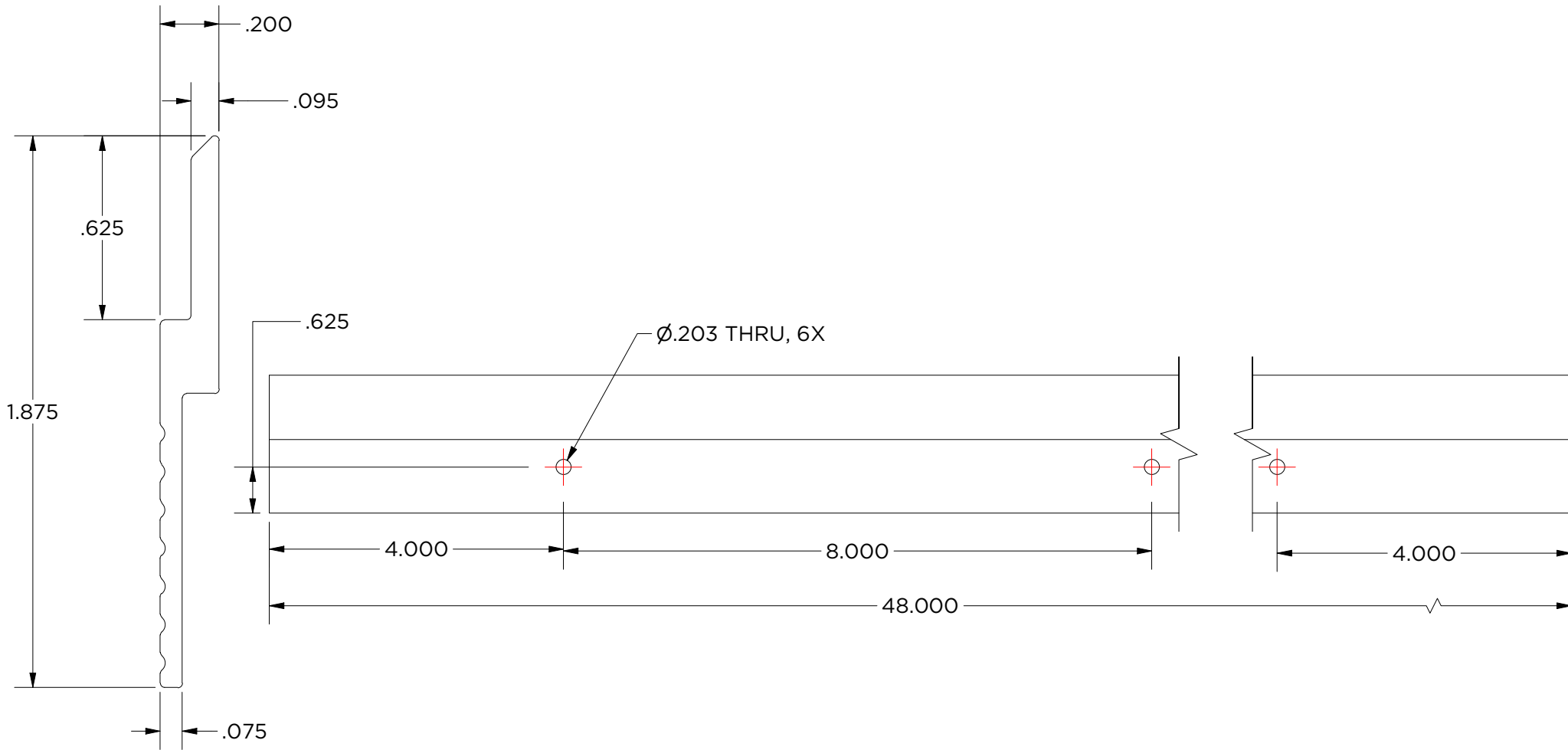
THE INFORMATION CONTAINED IN THIS DRAWING IS THE SOLE PROPERTY OF MONARCH METAL FABRICATION. ANY REPRODUCTION IN PART OR AS A WHOLE WITHOUT THE WRITTEN PERMISSION OF MONARCH METAL INC. IS PROHIBITED.

**New York**  
1700 Ocean Ave Suite 2  
Ronkonkoma NY 11779  
Phone: (631) 750-3000

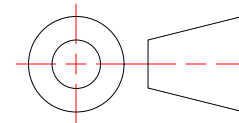
**Nevada**  
1080 Linda Way, Unit 10  
Sparks, NV 89431  
Phone: (775) 415-0100

**Texas**  
1330 Post & Paddock St.,  
Suite 800  
Grand Prairie, TX 75050  
(945) 202-2700

monarchmetal.com



<b>Created By:</b> AMH	<b>Approved By:</b>	<b>Sheet Size</b> A	<b>Sheet No.</b> 4/8
<b>Creation Date:</b> 10/15/2025	<b>Approval Date:</b>	<b>Scale</b> 1/2	<b>Rev</b> 2



**MF625-48H8**

Weight: 0.827 lbmass  
Aluminum 6063  
Finish: Mill



**MONARCH**  
METAL INC.

**PROPRIETARY AND CONFIDENTIAL**

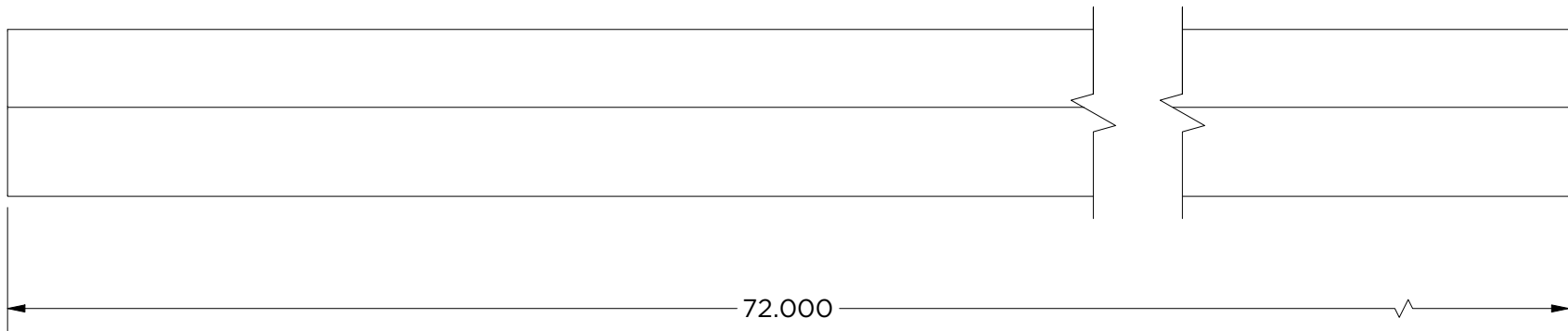
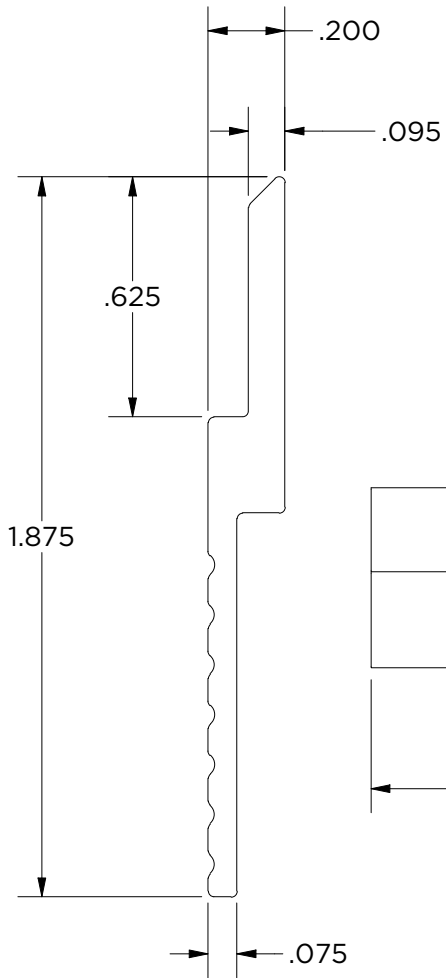
THE INFORMATION CONTAINED IN THIS DRAWING IS THE SOLE PROPERTY OF MONARCH METAL FABRICATION. ANY REPRODUCTION IN PART OR AS A WHOLE WITHOUT THE WRITTEN PERMISSION OF MONARCH METAL INC. IS PROHIBITED.

**New York**  
1700 Ocean Ave Suite 2  
Ronkonkoma NY 11779  
Phone: (631) 750-3000

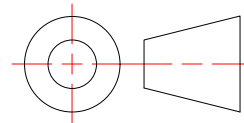
**Nevada**  
1080 Linda Way, Unit 10  
Sparks, NV 89431  
Phone: (775) 415-0100

**Texas**  
1330 Post & Paddock St.,  
Suite 800  
Grand Prairie, TX 75050  
(945) 202-2700

monarchmetal.com



<b>Created By:</b> AMH	<b>Approved By:</b>	<b>Sheet Size</b> A	<b>Sheet No.</b> 5/8
<b>Creation Date:</b> 10/15/2025	<b>Approval Date:</b>	<b>Scale</b> 2 : 1	<b>Rev</b> 2



**MF625-72**

Weight: 1.242 lbmass  
Aluminum 6063  
Finish: Mill



**MONARCH**  
METAL INC.

**PROPRIETARY AND CONFIDENTIAL**

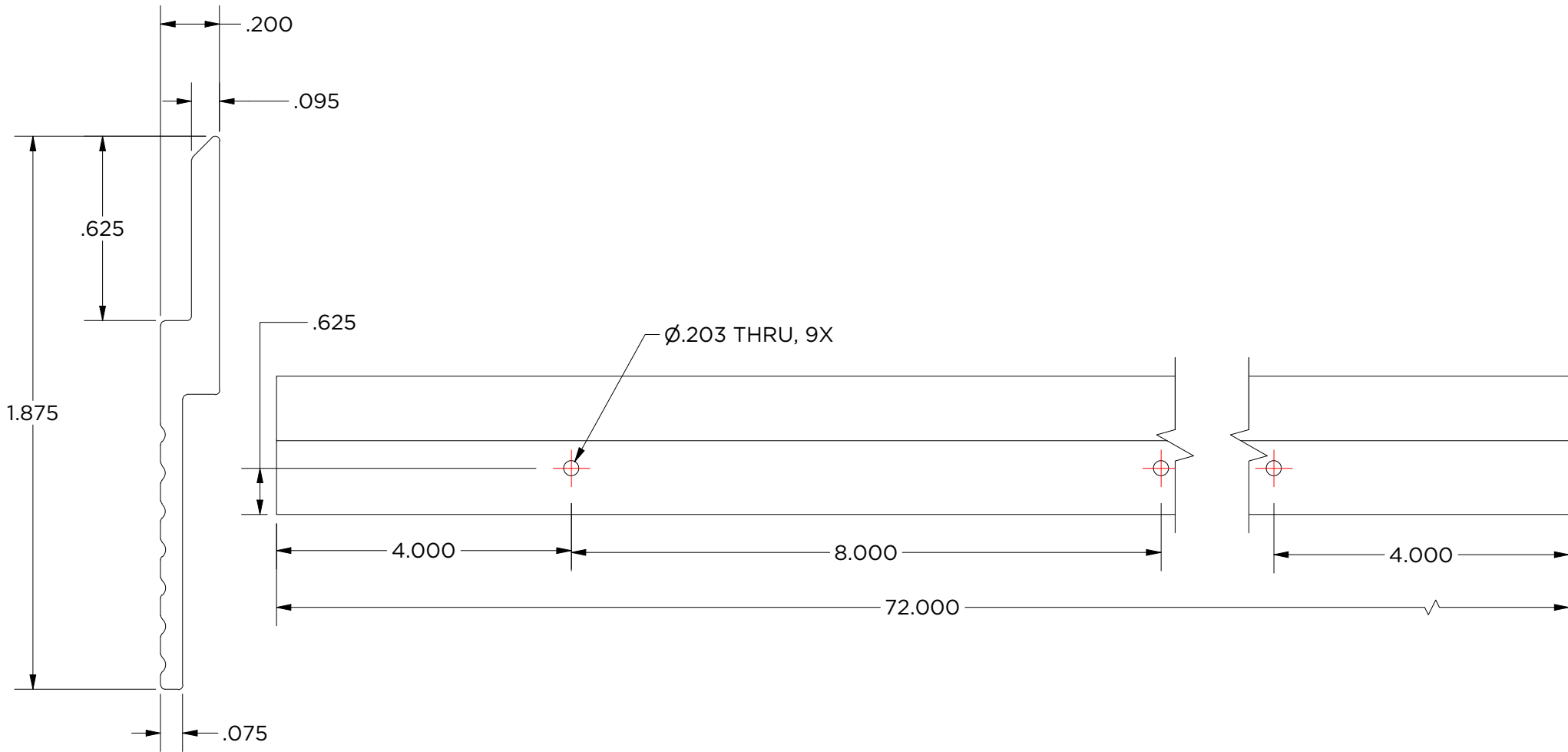
THE INFORMATION CONTAINED IN THIS DRAWING IS THE SOLE PROPERTY OF MONARCH METAL FABRICATION. ANY REPRODUCTION IN PART OR AS A WHOLE WITHOUT THE WRITTEN PERMISSION OF MONARCH METAL INC. IS PROHIBITED.

**New York**  
1700 Ocean Ave Suite 2  
Ronkonkoma NY 11779  
Phone: (631) 750-3000

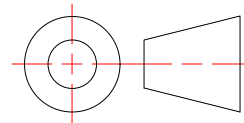
**Nevada**  
1080 Linda Way, Unit 10  
Sparks, NV 89431  
Phone: (775) 415-0100

**Texas**  
1330 Post & Paddock St.,  
Suite 800  
Grand Prairie, TX 75050  
(945) 202-2700

monarchmetal.com



<b>Created By:</b> AMH	<b>Approved By:</b>	<b>Sheet Size</b> A	<b>Sheet No.</b> 6/8
<b>Creation Date:</b> 10/15/2025	<b>Approval Date:</b>	<b>Scale</b> 2 : 1	<b>Rev</b> 2



**MF625-72H8**

Weight: 1.240 lbmass  
Aluminum 6063  
Finish: Mill



**MONARCH**  
METAL INC.

**PROPRIETARY AND CONFIDENTIAL**

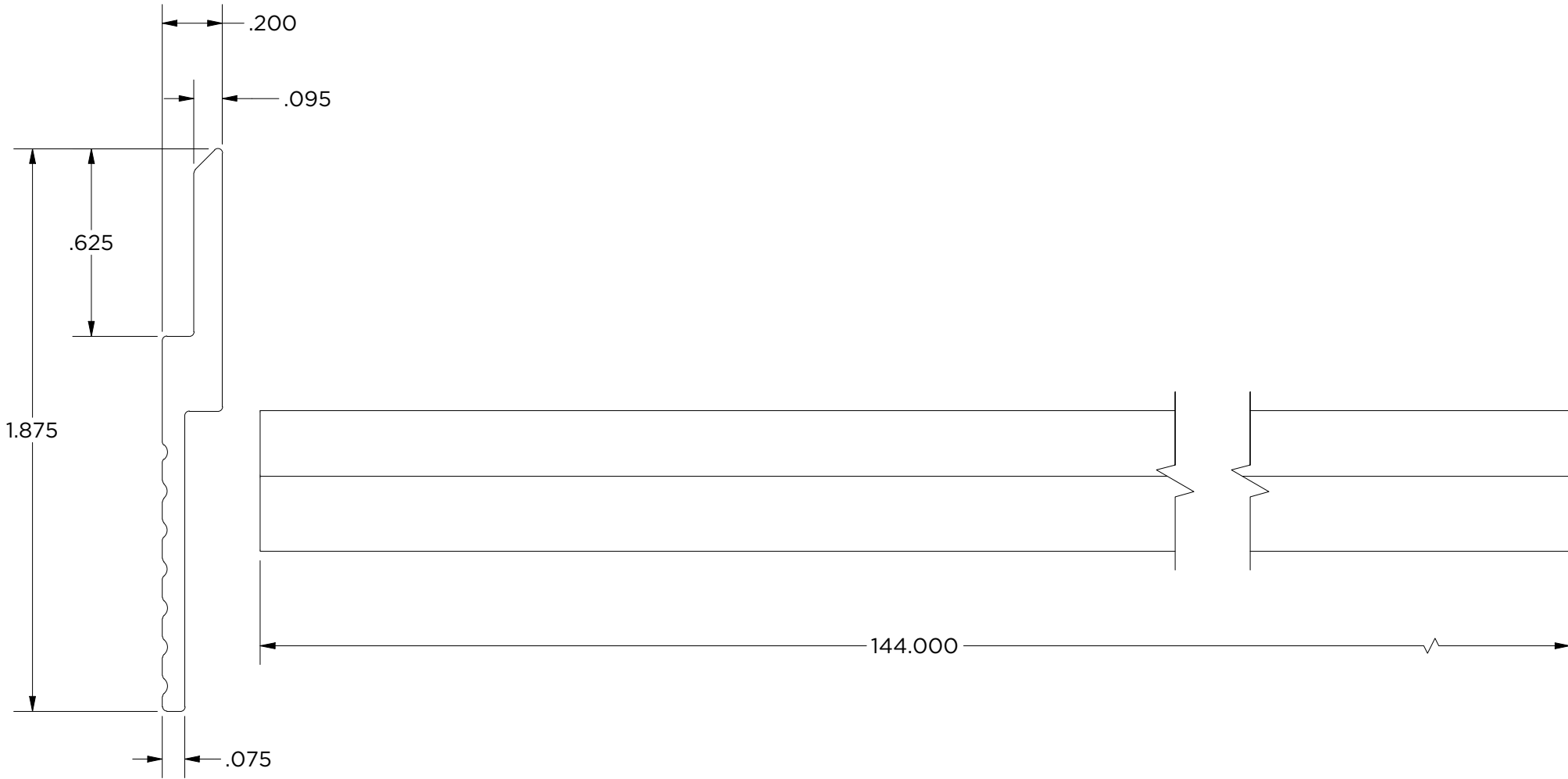
THE INFORMATION CONTAINED IN THIS DRAWING IS THE SOLE PROPERTY OF MONARCH METAL FABRICATION. ANY REPRODUCTION IN PART OR AS A WHOLE WITHOUT THE WRITTEN PERMISSION OF MONARCH METAL INC. IS PROHIBITED.

**New York**  
1700 Ocean Ave Suite 2  
Ronkonkoma NY 11779  
Phone: (631) 750-3000

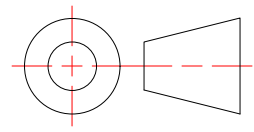
**Nevada**  
1080 Linda Way, Unit 10  
Sparks, NV 89431  
Phone: (775) 415-0100

**Texas**  
1330 Post & Paddock St.,  
Suite 800  
Grand Prairie, TX 75050  
(945) 202-2700

monarchmetal.com



<b>Created By:</b> AMH	<b>Approved By:</b>	<b>Sheet Size</b> A	<b>Sheet No.</b> 7/8
<b>Creation Date:</b> 10/15/2025	<b>Approval Date:</b>	<b>Scale</b> 2 : 1	<b>Rev</b> 2



**MF625-144**

Weight: 2.484 lbmass  
Aluminum 6063  
Finish: Mill

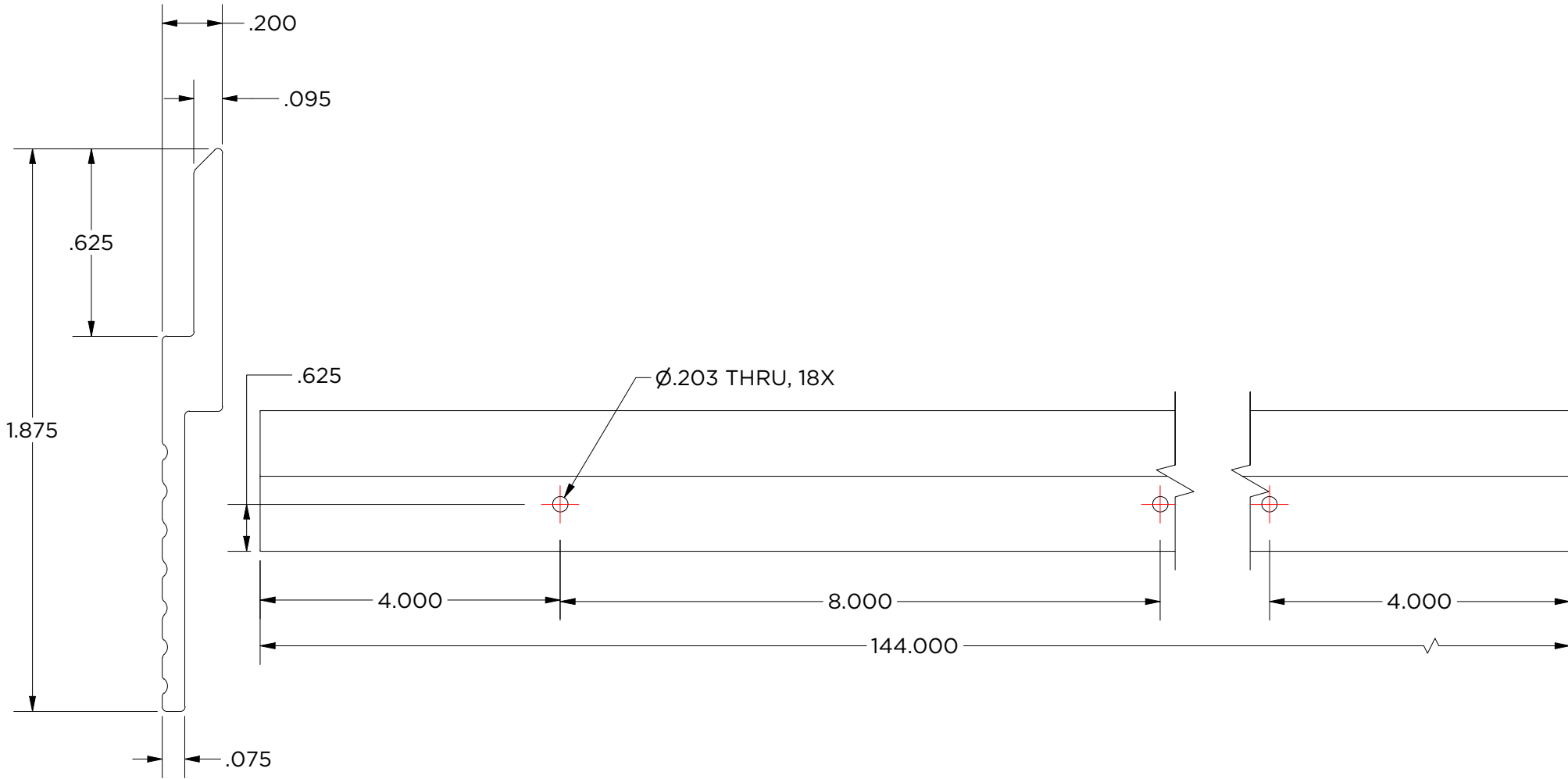


**MONARCH**  
METAL INC.

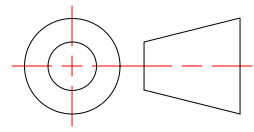
**PROPRIETARY AND CONFIDENTIAL**  
THE INFORMATION CONTAINED IN THIS DRAWING IS THE SOLE PROPERTY OF MONARCH METAL FABRICATION. ANY REPRODUCTION IN PART OR AS A WHOLE WITHOUT THE WRITTEN PERMISSION OF MONARCH METAL INC. IS PROHIBITED.

<b>New York</b> 1700 Ocean Ave Suite 2 Ronkonkoma NY 11779 Phone: (631) 750-3000	<b>Nevada</b> 1080 Linda Way, Unit 10 Sparks, NV 89431 Phone: (775) 415-0100	<b>Texas</b> 1330 Post & Paddock St., Suite 800 Grand Prairie, TX 75050 (945) 202-2700
---	---	--

monarchmetal.com



<b>Created By:</b> AMH	<b>Approved By:</b>	<b>Sheet Size</b> A	<b>Sheet No.</b> 8/8
<b>Creation Date:</b> 10/15/2025	<b>Approval Date:</b>	<b>Scale</b> 1/2	<b>Rev</b> 2



**MF625-144H8**

Weight: 2.480 lbmass  
Aluminum 6063  
Finish: Mill



**MONARCH**  
METAL INC.

**PROPRIETARY AND CONFIDENTIAL**  
THE INFORMATION CONTAINED IN THIS DRAWING IS THE SOLE PROPERTY OF MONARCH METAL FABRICATION. ANY REPRODUCTION IN PART OR AS A WHOLE WITHOUT THE WRITTEN PERMISSION OF MONARCH METAL INC. IS PROHIBITED.

<b>New York</b> 1700 Ocean Ave Suite 2 Ronkonkoma NY 11779 Phone: (631) 750-3000	<b>Nevada</b> 1080 Linda Way, Unit 10 Sparks, NV 89431 Phone: (775) 415-0100	<b>Texas</b> 1330 Post & Paddock St., Suite 800 Grand Prairie, TX 75050 (945) 202-2700
---	---	--

monarchmetal.com