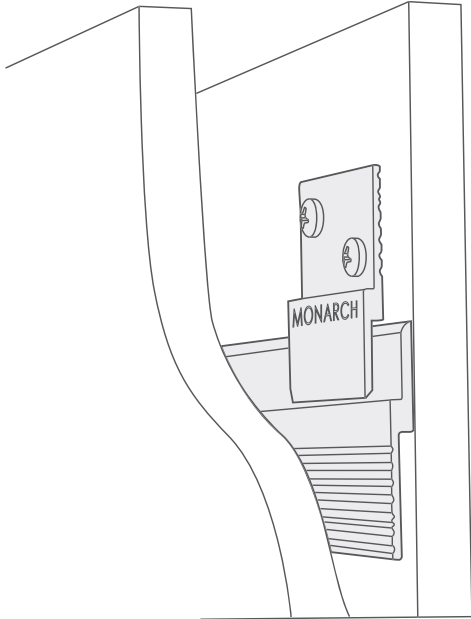




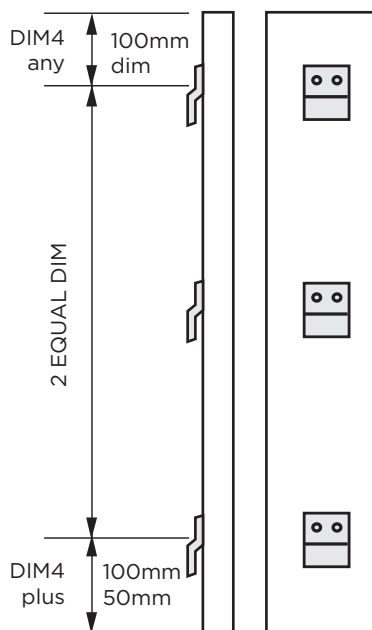
**MONARCH**  
METAL INC.

# Z CLIP HANGING SYSTEM



The key advantages of the Monarch Z Clip system are:

- Simplicity of installation
- Strength and security of the mounting
- No visible screws or nails on the surface of the mounted panel



For a typical 2500x1220 mm wide panel, customers mount the continuous lengths along the wall at 3 different heights parallel with the floor. These are secured to framing at 400mm on center or to blocking at 200mm on center.

The shorter panel clips are secured to the back of the panel every 300-400mm horizontally.

To match fastener locations on the panel with those on the wall a single template can be used or one can use a story pole.

Installation of the panel is accomplished by simply dropping the panel onto the continuous lengths mounted along the wall.

Monarch recommends a #8 or 5.5mm Pan Head screw for attaching the shorter panel clips to the back side of MDF or particle board panels.

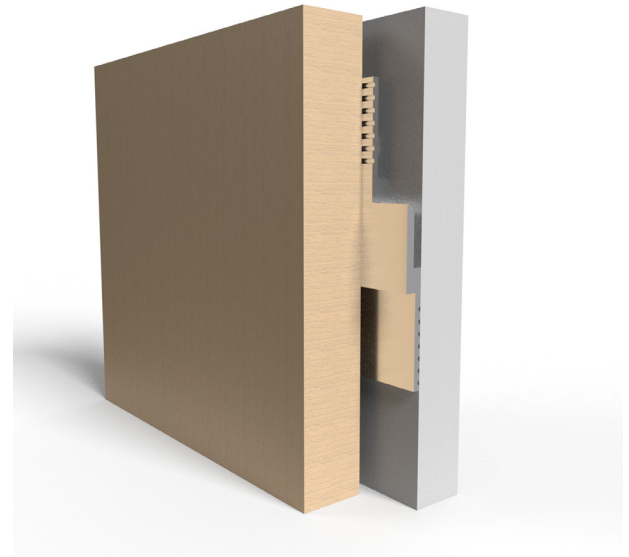
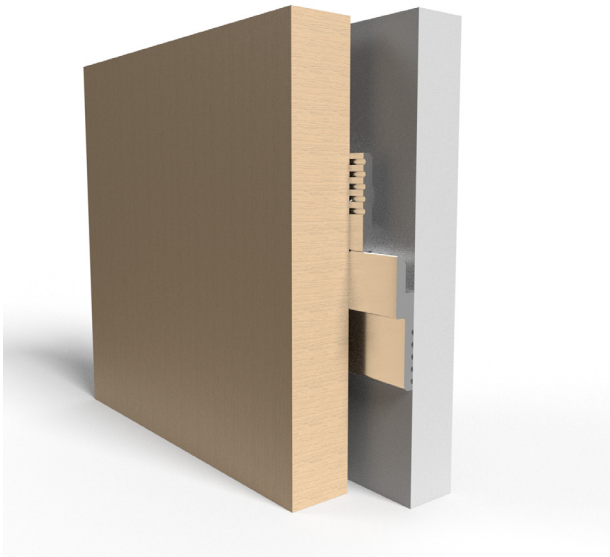
The important constraint to remember for using the Monarch Z Clip system is that the height of the head of the screw must be less than 3.2mm for our standard Monarch Z Clips.



## MF375



## MF625



	<b>MF375</b>
Material	Aluminum
Stock Clip Size	50mm
Stock Continuous Length	1250mm, 2500mm
Custom Lengths Available	Any
Lift Off (1)	9.5mm
Projection (2)	6.4mm
Availability	Same Day Shipping

	<b>MF625</b>
Material	Aluminum
Stock Clip Size	50mm
Stock Continuous Length	1250mm, 2500mm
Custom Lengths Available	Any
Lift Off (1)	15.9mm
Projection (2)	4.8mm
Availability	Same Day Shipping

(1) The “Lift-Off” is the amount you need to raise the panel over its resting height to mount the panel.

(2) The “Projection” is the distance that the panel sits out from the wall.