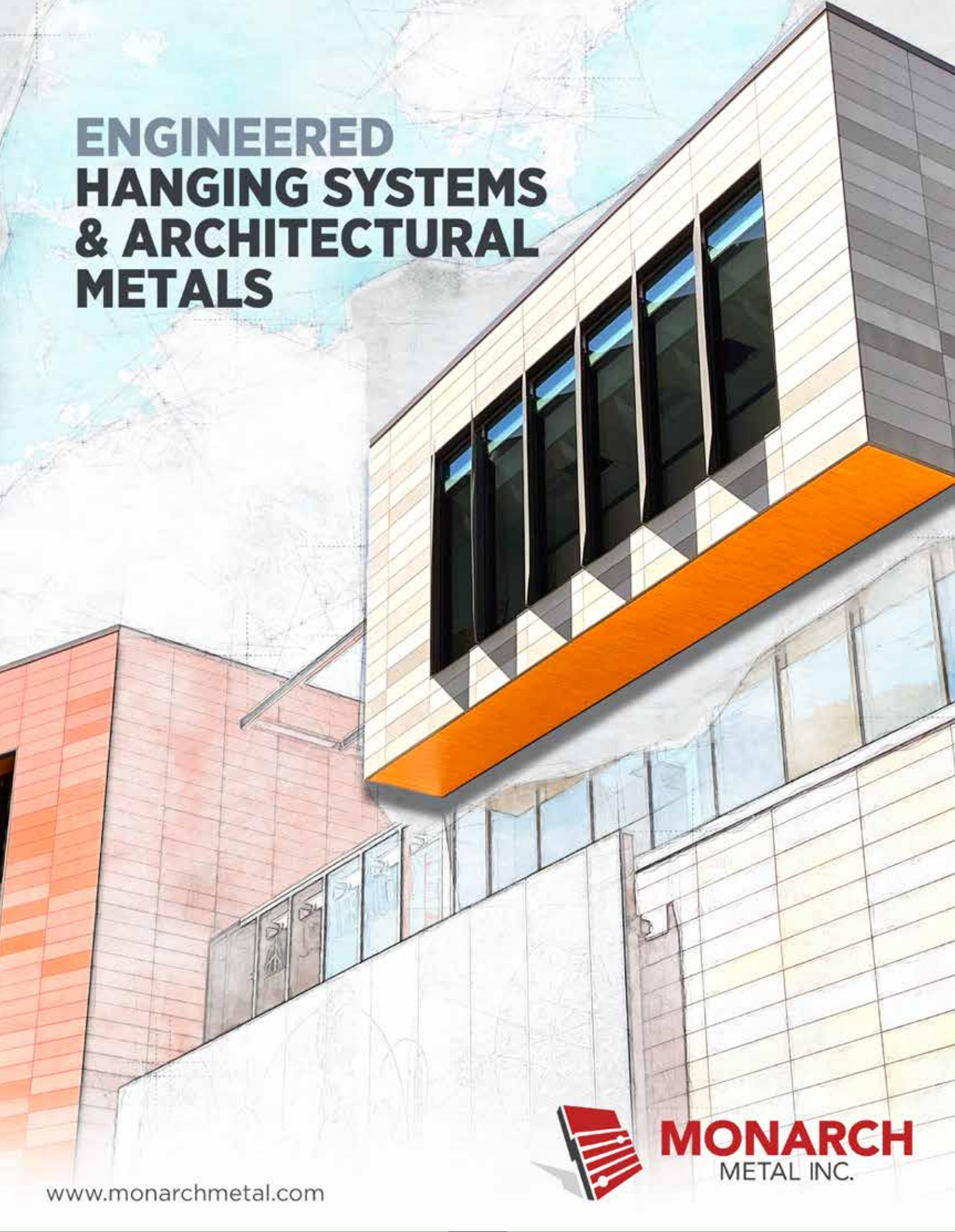


# ENGINEERED HANGING SYSTEMS & ARCHITECTURAL METALS



[www.monarchmetal.com](http://www.monarchmetal.com)



**MONARCH**  
METAL INC.



# WHY CHOOSE MONARCH METAL

---

We understand that receiving your orders quickly is important. We've worked to create more capacity and increased efficiency to reduce our lead time. To better serve our customers nationwide, we now ship from three locations. We can deliver to most U.S. states with next day or two-day delivery via ground shipping.

---



NEVADA

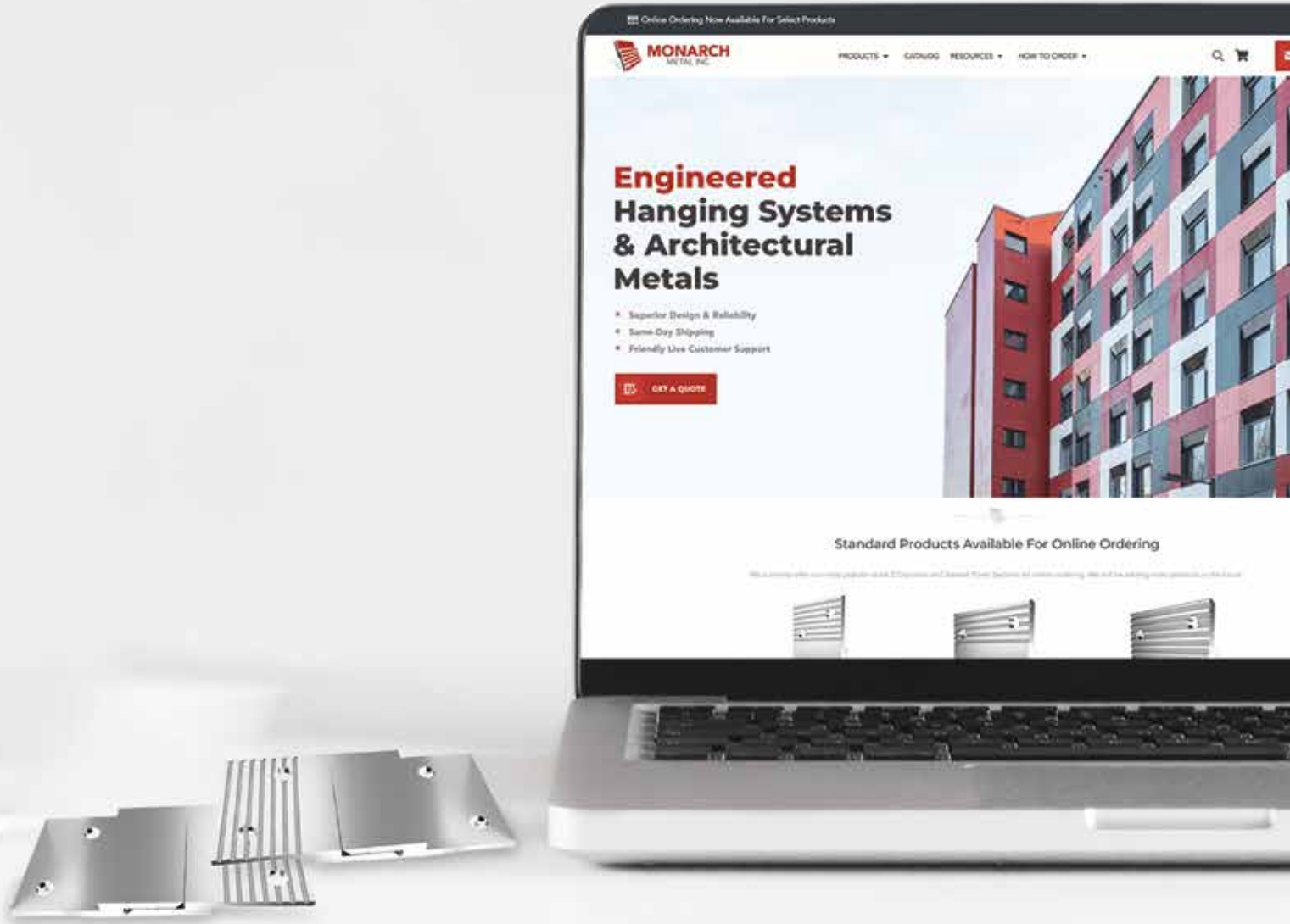


NEW YORK



TEXAS

[www.monarchmetal.com](http://www.monarchmetal.com)  
(631) 743-8030



# ORDER ONLINE

[www.monarchmetal.com](http://www.monarchmetal.com)

# STANDARD Z CLIPS

Our Z Clips are made of 6063-T6 aluminum and available in a variety of projection and lift off measurements. Our Z Clip solution are also available in continuous lengths (rails) of 72 inches or 144 inches. There are several installation options; clip to clip, clip to rail or rail to rail.

## MF625

1 1/2 INCH STOCK CLIP SIZE  
3/16 INCH PROJECTION  
5/8 INCH LIFT-OFF

## MF375

2 INCH STOCK CLIP SIZE  
1/4 INCH PROJECTION  
3/8 INCH LIFT-OFF

## MF250

2 INCH STOCK CLIP SIZE  
1/4 INCH PROJECTION  
1/4 INCH LIFT-OFF

### TWO CLIPS MATED



### RAIL & CLIP ISOMETRIC VIEW



# HIGH LOAD Z CLIPS

Our High Load Z Clips are made of 6063-T6 aluminum for high strength applications that require a larger bolt. Stock clips use 1/4 inch holes, custom clips available up to 3/8 inch holes. Mounts quickly on concrete block or other difficult materials. Also available in continuous lengths (rails) of 72 inches or 144 inches.

## MFSTR-0375

2 INCH STOCK CLIP SIZE  
3/8 INCH PROJECTION  
3/4 INCH LIFT-OFF

## MFSTR-050

2 INCH STOCK CLIP SIZE  
1/2 INCH PROJECTION  
7/16 INCH LIFT-OFF

## MFSTR-075

2 INCH STOCK CLIP SIZE  
3/4 INCH PROJECTION  
5/8 INCH LIFT-OFF

### TWO CLIPS MATED



### RAIL & CLIP ISOMETRIC VIEW



# ZERO LIFT SNAP IN CLIPS

---

Two-piece system featuring 316 stainless steel Zero-Lift panel clips. Provides fast installation, with flush and surface options, requiring zero lift off for removal. Suitable for interior and exterior usage for a variety of substrates and combinations.

---



# MSNAP & RAIL

---

Our new zero-lift rail system for installing a wide variety of interior panels. The system is a snap-fit system of clips and rails, designed to allow for installations up against existing surfaces, or tight to ceilings. Being an extruded aluminum snap-fit system, it's very durable, and has a higher weight capacity than its plastic rivals.

---



# ADHESIVE BACKED Z CLIPS

---

Suitable for interior installations with only 1/2 inch clearance above the panel. It is made of aluminum and features a stock clip size length of 2 inches as well as continuous lengths (rails) in 72 inches or 144 inches, with or without 3M adhesive tape. Pairs with MF375 Rail.

---





# TECHNICAL CAPABILITIES

---

From project inception through installation let us assist you in delivering efficient, professional technical consultation. We can help anyone from the architect to the end user.

## VALUE ADDED SERVICES

Takeoffs  
Dedicated Estimating Team  
Product Application Assistance  
Custom Product Design  
Custom Fabrication  
Product Samples  
Custom Finishes

---

## ARCHITECT EDUCATION

We offer lunch and learns and AIA approved continuing education credits (CEUs) for architects.

---

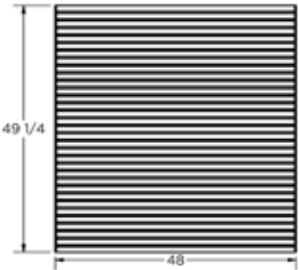
## CONTACT US

[www.monarchmetal.com](http://www.monarchmetal.com)  
(631) 743-8030

# SLATWALL PANEL SYSTEMS

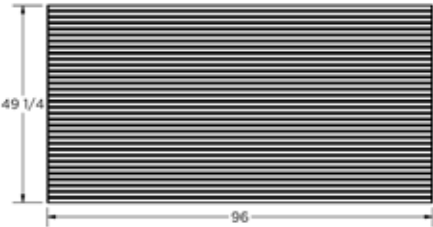
Our MSLAT slatwall panel system kits have been designed to supply users in retail, commercial, and residential sectors with the finest aluminum slatwall system on the market. All kits are packaged with the necessary profiles, starter rails, head trims, and vertical trims. Custom slatwall dimensions also available.

## 1.5" SPACING PROFILES



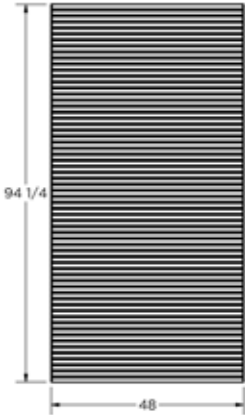
**4x4'**

MFSLAT-15-48X48-CL



**4x8'**

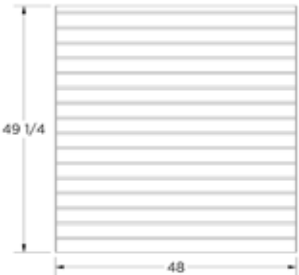
MFSLAT-15-48X96-CL



**8x4'**

MFSLAT-15-96X48-CL

## 3" SPACING PROFILES



**4x4'**

MFSLAT-30-48X48-CL



**4x8'**

MFSLAT-30-48X96-CL



**8x4'**

MFSLAT-30-96X48-CL



## **GARAGE & WORKSHOP**

---

Whether you are a DIY enthusiast, a professional mechanic, or simply need to organize your household items, slatwall can provide a practical and stylish solution for organizing and maximizing space in your garage.

---



## **RETAIL & COMMERCIAL**

---

Versatile and practical storage solution that can provide retailers and commercial businesses with an effective way to organize, display, and manage their products in a way that is both attractive and functional.

---

A close-up photograph of a wall featuring a wood-grain paneling system. The panels are held together by a silver aluminum trim system with visible fasteners. The wood grain is a rich, dark brown color. The aluminum trim is a light, metallic silver. The panels are arranged in a grid pattern, with the trim running horizontally and vertically to secure the panels in place.

## **EASY PANEL SYSTEM**

---

Convenient and cost-effective aluminum trim for wall panels Offering panel fabricators the flexibility to manufacture their own wall panels and then choose from a variety of off the shelf, popular aluminum trim options.

---

# FEATURES & BENEFITS

COMPATIBLE WITH 3/4", 1/2" AND 3/8" PANELS

INTUITIVE INSTALLATION CENTERED AROUND MONARCH Z CLIPS

CLOSE TO 100 DIFFERENT AESTHETICS POSSIBLE

OFF THE SHELF SHIPPING FOR FAST LEAD TIMES

COMPATIBLE WITH 3M DUAL LOCK



VISIT [MONARCHMETAL.COM](http://MONARCHMETAL.COM) FOR A COMPLETE LIST OF PROFILES, EDGE TRIM & CORNER OPTIONS, AND ACCESSORIES



## **SNAP PANEL SYSTEM**

---

The Monarch Metal Snap Panel System (SPS) features a patent-pending MSNAP design for zero-lift, snap-fit installation, enabling quick setup, easy panel replacement, and modular adaptability for both 3/8" and 3/4" panels.

---



# INTEGRATES WITH OUR MSNAP SYSTEM

## PATENT PENDING

At the heart of our SPS - Snap Panel System is our innovative, patent-pending MSNAP - Snap Panel System. This advanced design seamlessly integrates a wall rail and panel rail, ensuring a secure, efficient, and versatile installation process.

One trim, twice the versatility—SPS edge trims and reveals are engineered to seamlessly fit both 3/8" and 3/4" panels, delivering a perfect finish every time.



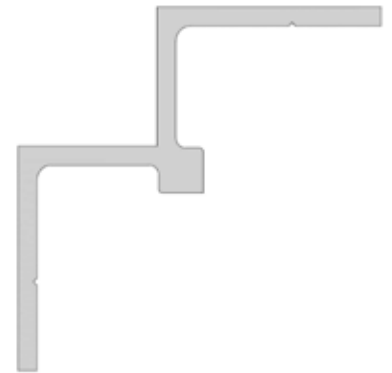
**Edge and Reveal  
Narrow**

SPS-ET-N



**Edge and Reveal  
Linear**

SPS-ET-L



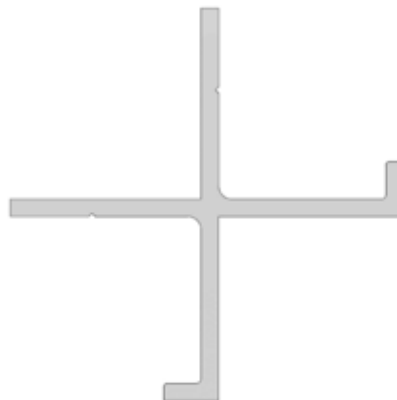
**Inside  
Corner**

SPS-IC



**Outside Corner  
Narrow Square**

SPS-OC-NSQ



**Outside Corner  
Captured**

SPS-OC-C

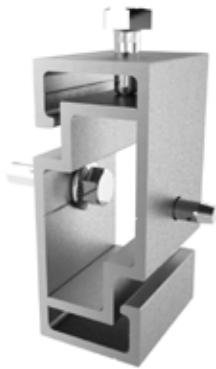


**Outside Corner  
Linear Miter**

SPS-OC-LM

# CONCEALED CLADDING SYSTEMS

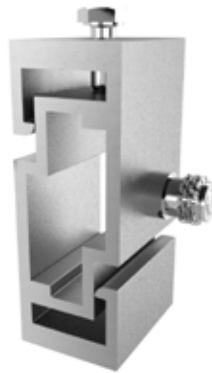
Providing the best-in-class cladding installation solutions. Thermally isolated wall brackets are easy to install and made in the United States. Fabricated from strong 6061 T6 aluminum, our wall brackets work universally with metal studs, wood, and concrete masonry units (CMU).



## Standard Rail & Brackets

MFSTR-LW1250

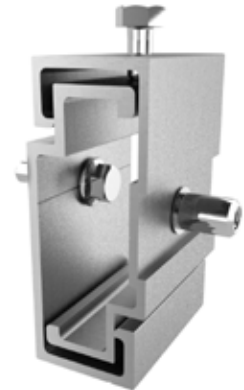
For concealed anchor installations using standard fasteners



## Heavy Duty Rail & Bracket

MFSTR-1125

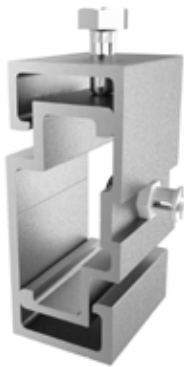
Concealed anchor façade installation for heavy panels



## Honeycomb Rail & Bracket System

MFSTR-DNRail

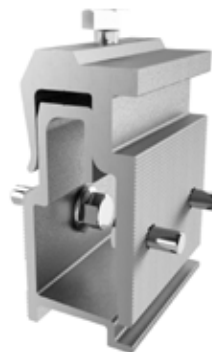
Fastening system to securely install honeycomb panels in ventilated rain screen applications



## Undercut Anchor Rail & Brackets (Keil)

MFSTR-UCRail

For concealed anchor installations using Keil Undercut Anchors



## Rail & Bracket for HPL Phenolic Panels

200-000-Rail

Concealed anchor installations for HPL Phenolic Panels requiring NFPA 285 rating.



## Rail & Bracket for Lightweight Panels

MHPL

Concealed fastener rail and bracket for lightweight panel systems

PURA<sup>®</sup> NFC

BY TRESPA

# TRESPA PURA NFC SYSTEM

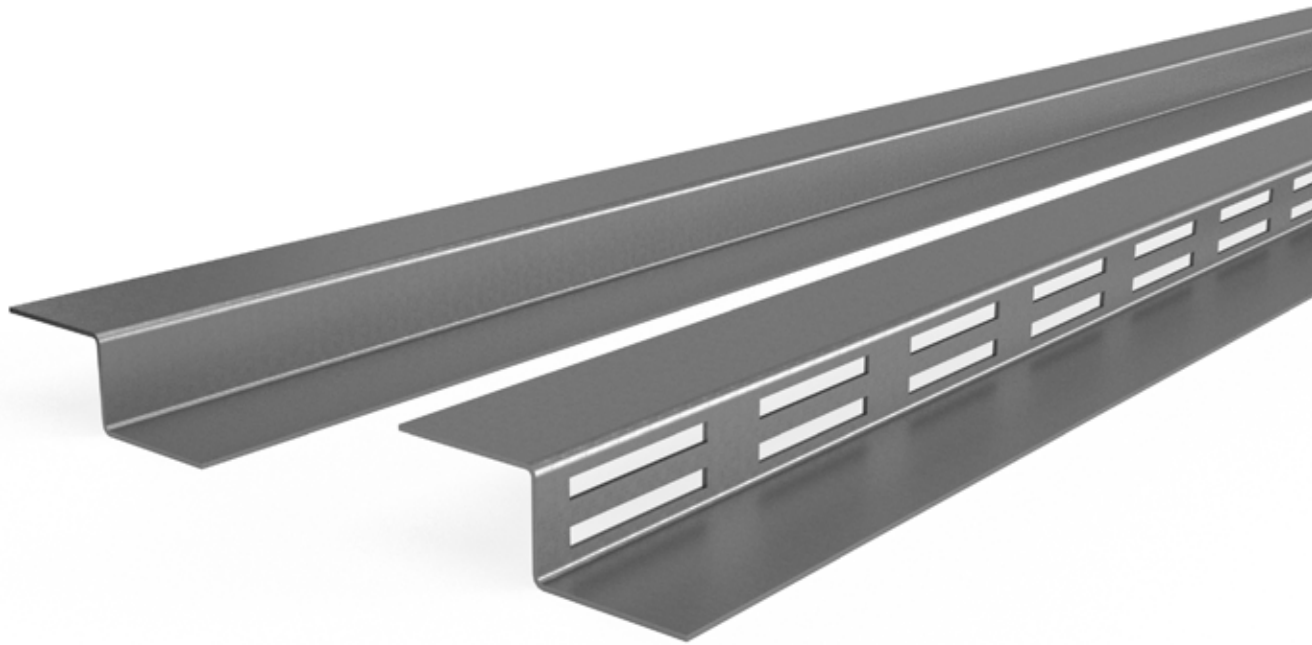
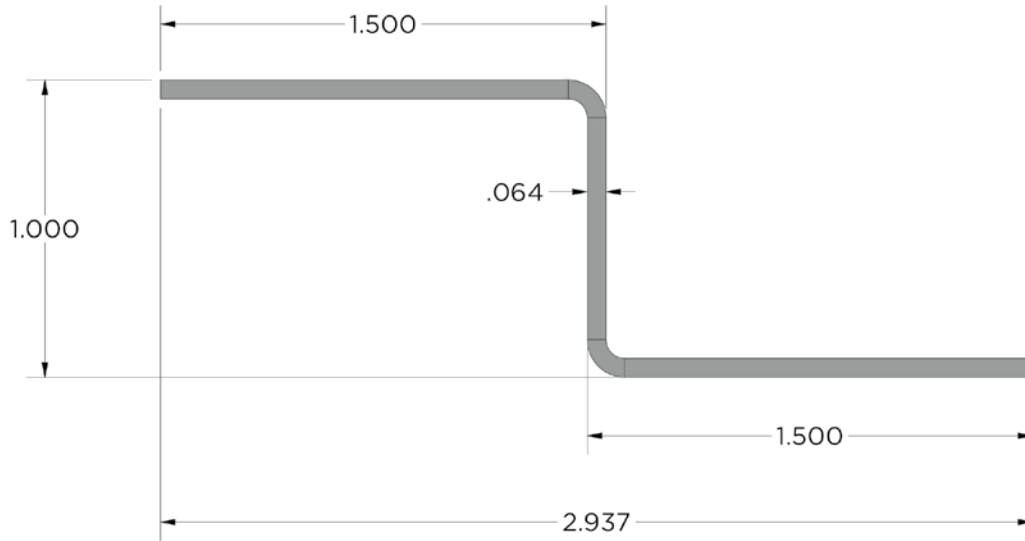
Our new system simplifies the installation of Trespa Pura by eliminating the typical 1x wood furring strips, and EPDM strips, common with typical installation systems.



- 1 MFTP - Clip
- 2 MFTPSR - Starter Rail

# STOCK Z GIRTS

Our Z Girts are an extremely versatile cladding support component and can be used behind almost any cladding system. Zees are typically used in exterior applications, but can also be used in interior applications, where a heavier duty panel, or more durable support system is required.



## AVAILABLE OPTIONS

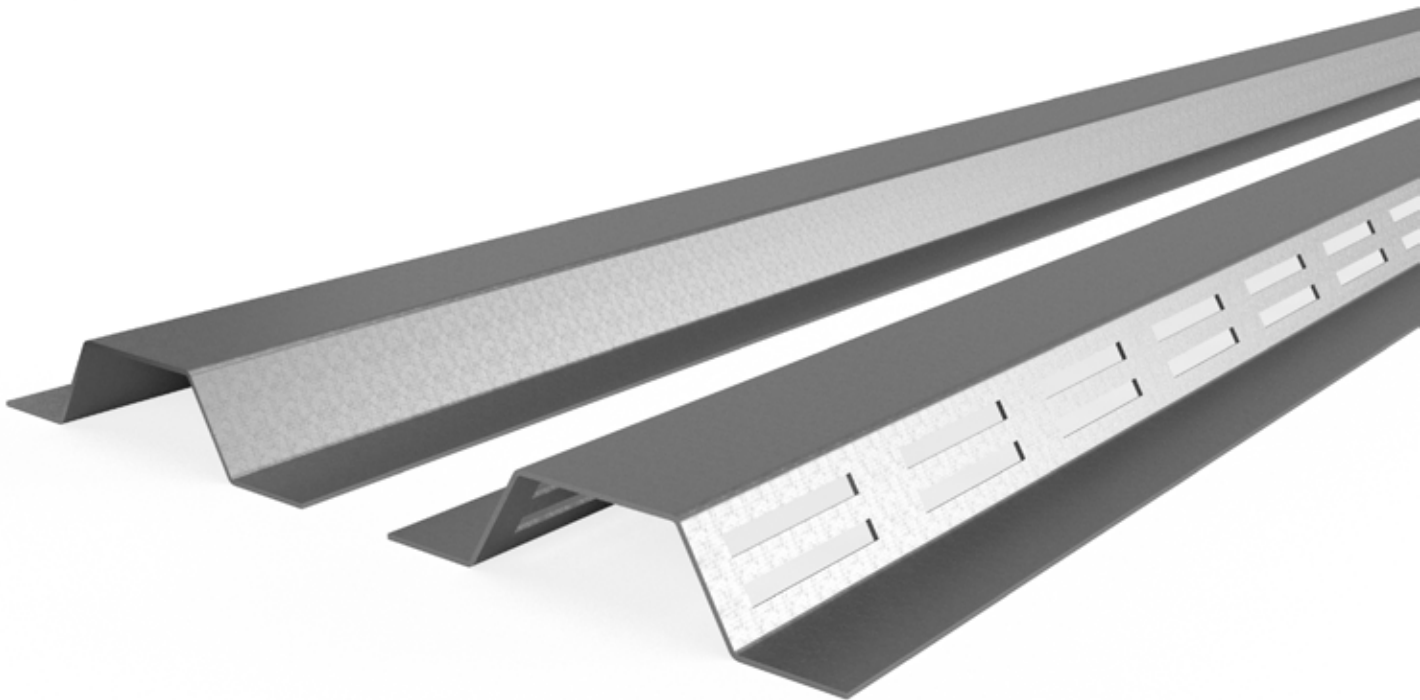
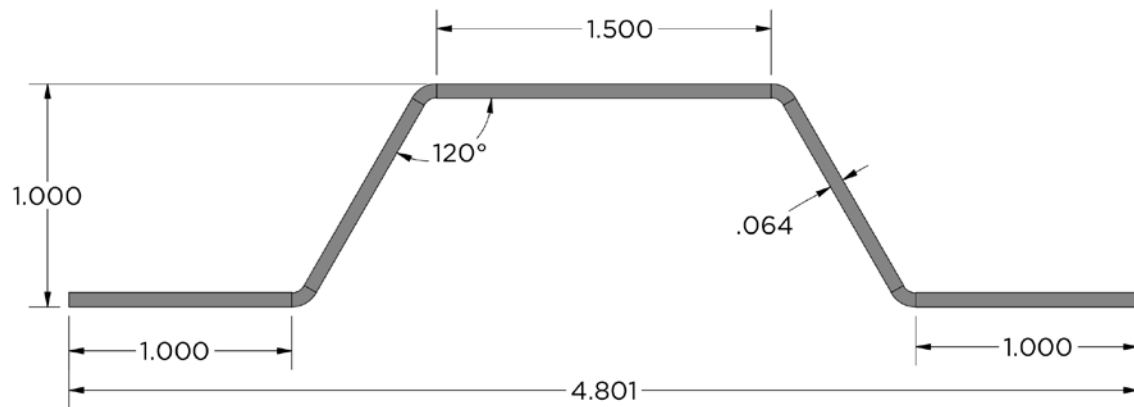
18GA OR 16GA

SOLID OR VENTED

96", 120", 144" OR CUSTOM LENGTHS

# STOCK HAT CHANNELS

Our hat channels are an extremely versatile cladding support component and can be used behind almost any cladding system. Hat channels are typically used in exterior applications, but can also be used in interior applications, where a heavier duty panel, or more durable support system is required.



## AVAILABLE OPTIONS

18GA OR 16GA

SOLID OR VENTED

96", 120", 144" OR CUSTOM LENGTHS

# ALUMINUM ANGLES

---

Our architectural aluminum angles are extruded from 6063-T6 Aluminum and can be used in various architectural applications. Designed for versatility, they are commonly used to finish millwork, trim, or add protection for surfaces, while also providing structural support and enhancing the aesthetic appeal of a project.

---



## AVAILABLE OPTIONS

0.75", 1", 1.25", 1.5", 2" WIDTHS

48", 96", 192" OR CUSTOM LENGTHS

# ALUMINUM FLAT BARS

---

Our architectural aluminum flat bars are extruded from 6063-T6 Aluminum and can be used in various architectural applications. Designed for versatility, they are commonly used to finish millwork, trim, or add protection for surfaces, while also offering durability and corrosion resistance, making them suitable for any project.

---



## AVAILABLE OPTIONS

0.75", 1", 1.5" WIDTHS

48", 96", 192" OR CUSTOM LENGTHS



## **CORNER GUARDS**

---

Our stainless steel corner guards, crafted from durable 304 alloy with a #4 brushed finish, protect wall corners in high-traffic areas and are available in various widths and attachment styles to suit different installation needs.

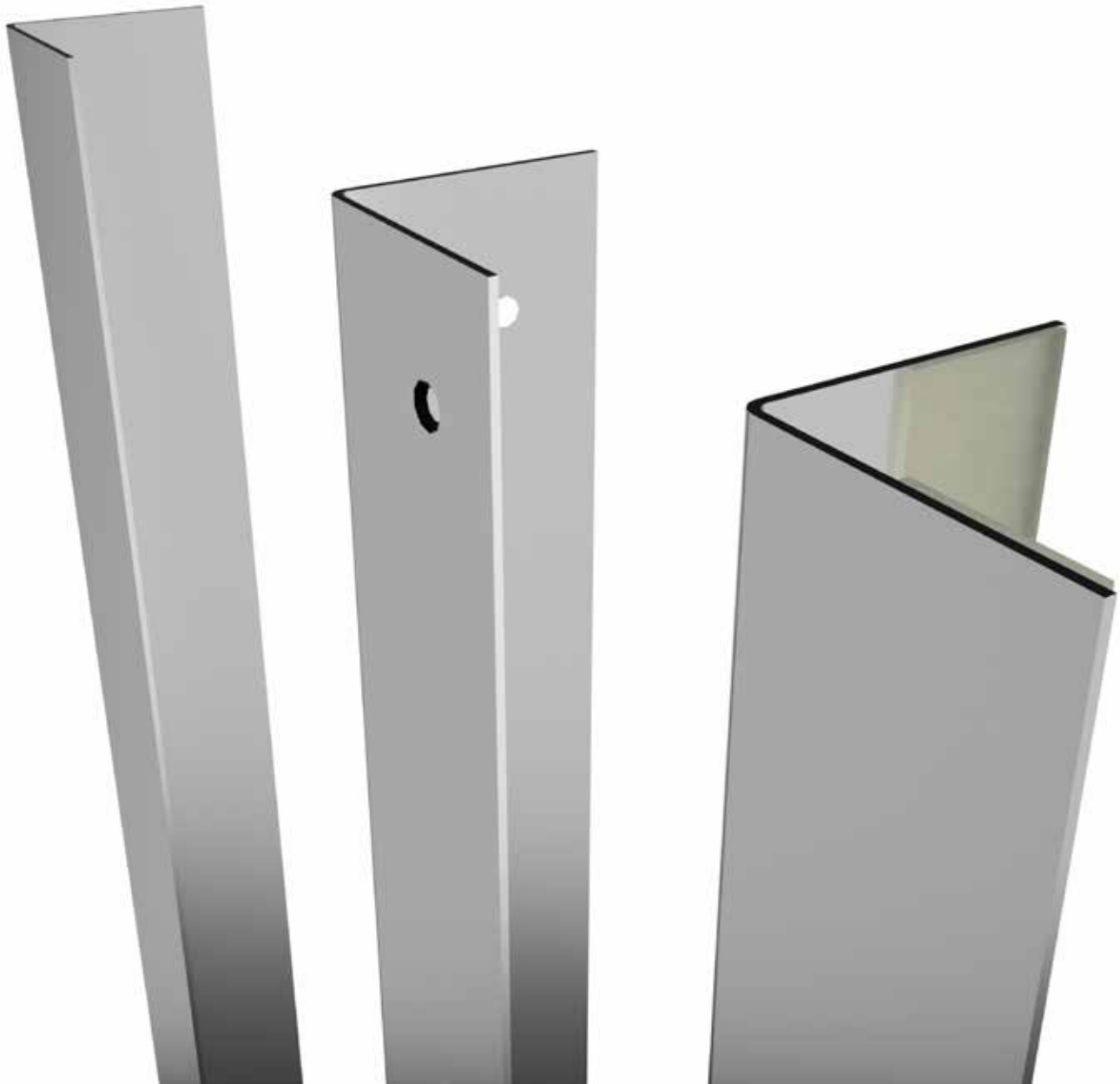
---

# CORNER GUARDS

---

Our stainless steel corner guards, made from durable 304 alloy with a #4 brushed finish, protect wall corners from wear and damage in high-traffic areas like hospitals, retail stores, and warehouses. They come in various widths and attachment styles for different installation needs.

---



## AVAILABLE OPTIONS

1.5", 2", 3" WIDTHS

ATTACHMENTS: STANDARD, WITH COUNTERSUNK HOLES, WITH TAPE

# WALL BRACKETS

---

Providing the best-in-class cladding installation solutions, thermally isolated wall brackets from Monarch Metal Inc. are easy to install and made in the United States. Fabricated from strong 6061 T6 aluminum, our wall brackets work universally with metal studs, wood, and concrete masonry units (CMU).

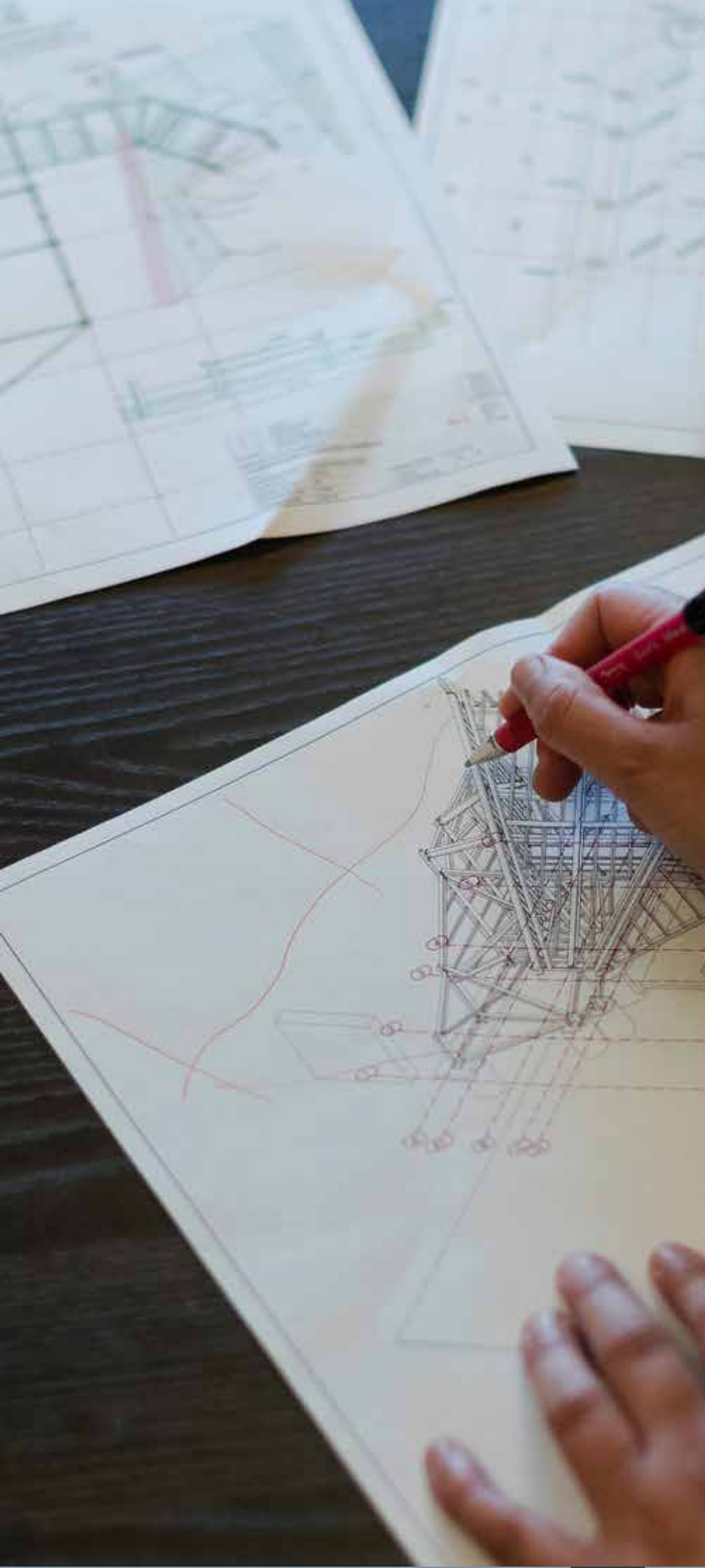


## HORIZONTAL WALL BRACKET

FEATURES A  
THERMAL ISOLATION PAD



## VERTICAL WALL BRACKET



# CUSTOM EXTRUSION REQUESTS

---

We can help you develop a new custom extrusion to meet your needs. Extrusions can be designed to reduce the number of components needed, increase assembly speed, and add value.

## OUR PROCESS

Review Customer Materials  
Develop Initial Ideas and Plans  
Customer Consultation Meeting  
Design and Development of Product(s)  
Prototyping as Needed  
3D Printed Samples as Needed  
Cost Estimate Delivered to Customer  
Tooling Ordered  
Extrusions Delivered

---

**FOR INFO, EMAIL US**  
[engineering@monarchmetal.com](mailto:engineering@monarchmetal.com)

**NEVADA | NEW YORK | TEXAS**



[www.monarchmetal.com](http://www.monarchmetal.com)  
(631) 743-8030