

ENGINEERED HANGING SYSTEMS & ARCHITECTURAL METALS

www.monarchmetal.com



MONARCH
METAL INC.



WHY CHOOSE MONARCH METAL

We understand that receiving your orders quickly is important. We've worked to create more capacity and increased efficiency to reduce our lead time. To better serve our customers nationwide, we now ship from three locations. We can deliver to most U.S. states with next day or two-day delivery via ground shipping.

www.monarchmetal.com
(631) 743-8030



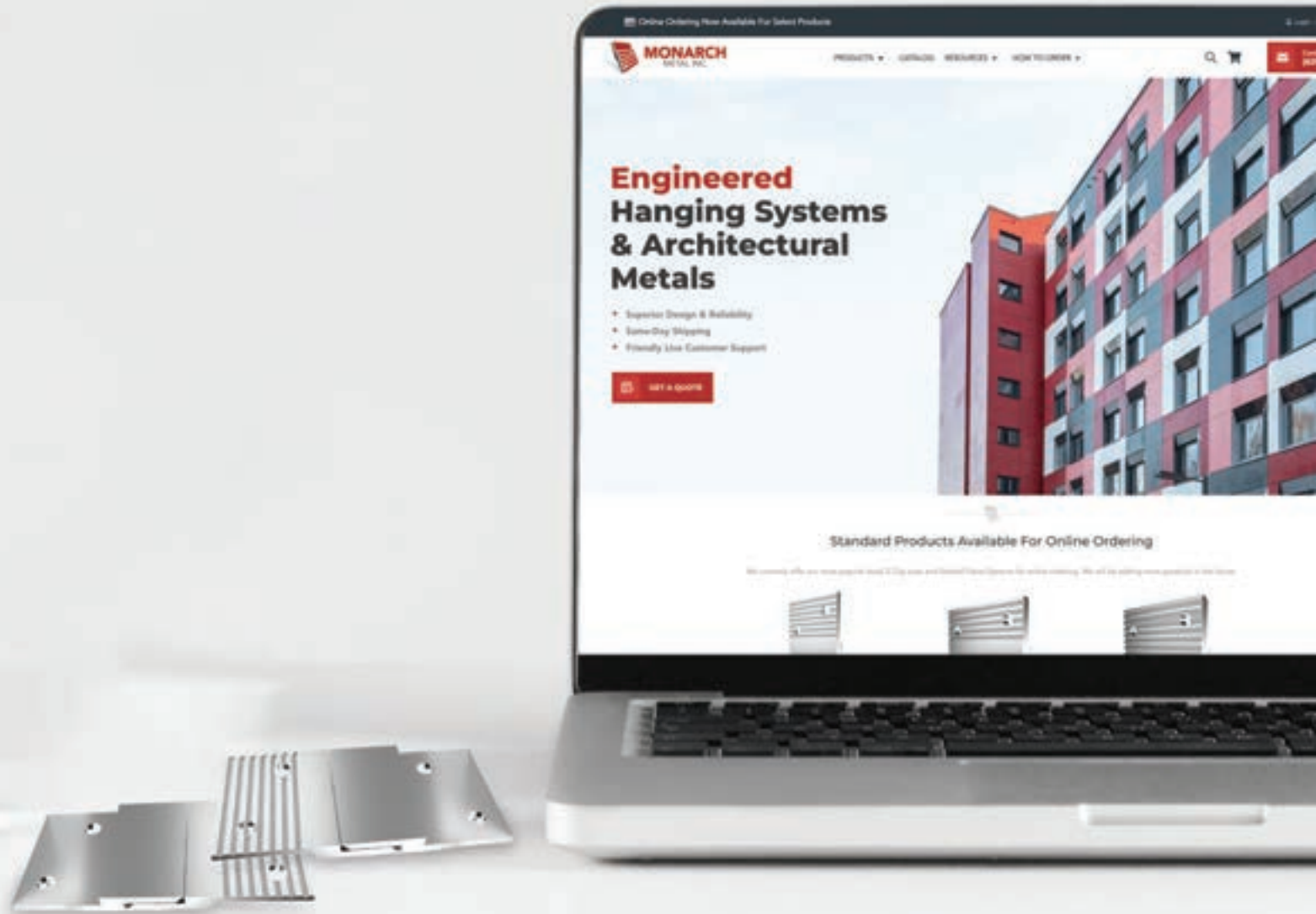
NEVADA



NEW YORK



TEXAS



ORDER ONLINE

www.monarchmetal.com

STANDARD Z CLIPS

Our Z Clips are made of 6063-6 aluminum and available in a variety of projection and lift off measurements. Our Clip solution are also available in continuous lengths (rails) of 72 inches or 144 inches. There are several installation options for installation: clip to clip, clip to rail or rail to rail.

MF625

1 1/2 INCH STOCK CLIP SIZE
3/16 INCH PROJECTION
5/8 INCH LIFT-OFF

MF375

2 INCH STOCK CLIP SIZE
1/4 INCH PROJECTION
3/8 INCH LIFT-OFF

MF250

2 INCH STOCK CLIP SIZE
1/4 INCH PROJECTION
1/4 INCH LIFT-OFF

TWO CLIPS MATED



RAIL & CLIP ISOMETRIC VIEW



HIGH LOAD Z CLIPS

Our High Load Z Clips are made of 6063-6 aluminum for high strength applications that require a larger bolt. Stock clips use 1/4 inch holes, custom clips available up to 3/8 inch holes. Mounts quickly on concrete block or other difficult materials. Also available in continuous lengths (rails) of 72 inches or 144 inches.

MFSTR-0375

2 INCH STOCK CLIP SIZE
3/8 INCH PROJECTION
3/4 INCH LIFT-OFF

MFSTR-050

2 INCH STOCK CLIP SIZE
1/2 INCH PROJECTION
7/16 INCH LIFT-OFF

MFSTR-075

2 INCH STOCK CLIP SIZE
3/4 INCH PROJECTION
5/8 INCH LIFT-OFF

TWO CLIPS MATED



RAIL & CLIP ISOMETRIC VIEW



ZERO LIFT SNAP IN CLIPS

Two-piece system featuring 316 stainless steel Zero-Lift panel clips. Provides fast installation, with flush and surface options, requiring zero lift off for removal. Suitable for interior and exterior usage and allows for a variety of substrates and combinations.



MSNAP & RAIL

Our new zero-lift rail system for installing a wide variety of interior panels. The system is a snap-fit system of clips and rails, designed to allow for flush installations up against existing surfaces, or tight to ceilings. Being an extruded aluminum snap-fit system, it's very durable, and has a higher weight capacity than it's plastic rivals.



ADHESIVE BACKED Z CLIPS

Suitable for interior installations with only 1/2 inch clearance above the panel. It is made of aluminum and features a stock clip size length of 2 inches as well as continuous lengths (rails) in 72 inches or 144 inches, with or without 3M adhesive tape. Pairs with MF375 Rail.





TECHNICAL CAPABILITIES

From project inception through installation let us assist you in delivering efficient, professional technical consultation. We can help anyone from the architect to the end user.

VALUE ADDED SERVICES

Takeoffs
Dedicated Estimating Team
Product Application Assistance
Custom Product Design
Custom Fabrication
Product Samples
Custom Finishes

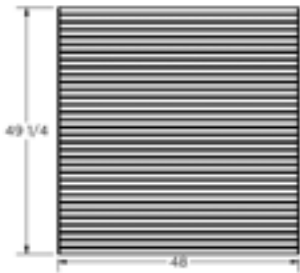
CONTACT US

www.monarchmetal.com
(631) 743-8030

SLATWALL PANEL SYSTEMS

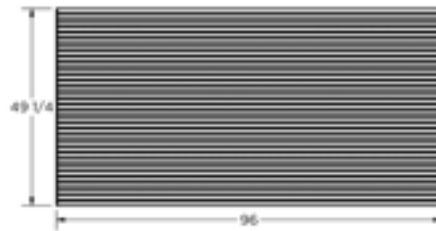
Our MSLAT slatwall panel system kits have been designed to supply users in retail, commercial, and residential sectors with the finest aluminum slatwall system on the market. All kits are packaged with the necessary profiles, starter rails, head trims, and vertical trims. Custom slatwall dimensions also available.

1.5" SPACING PROFILES



4x4'

MFSLAT-15-48X48-CL



4x8'

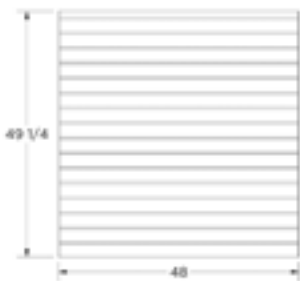
MFSLAT-15-48X96-CL



8x4'

MFSLAT-15-96X48-CL

3" SPACING PROFILES



4x4'

MFSLAT-30-48X48-CL



4x8'

MFSLAT-30-48X96-CL



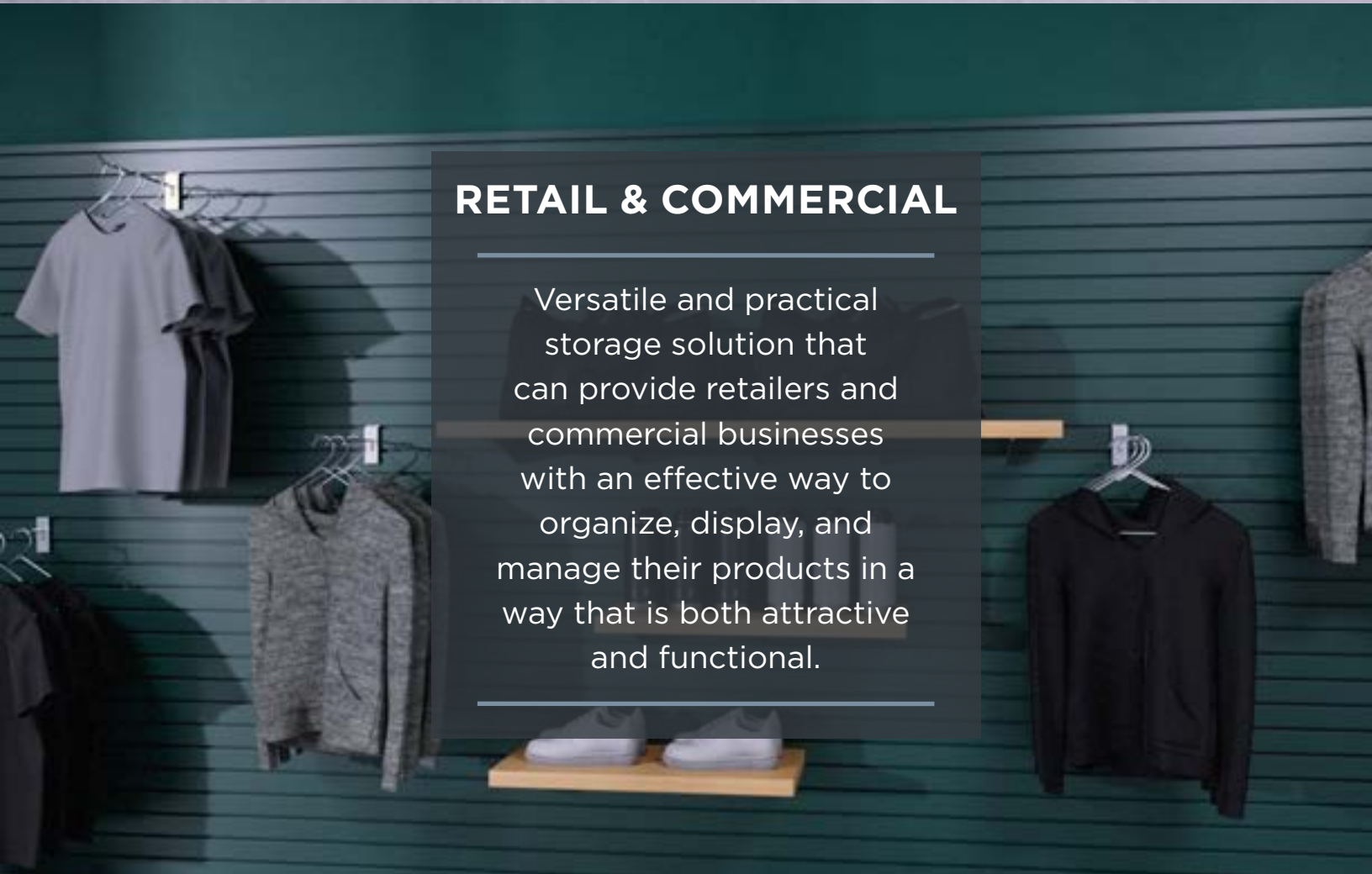
8x4'

MFSLAT-30-96X48-CL



GARAGE & WORKSHOP

Whether you are a DIY enthusiast, a professional mechanic, or simply need to organize your household items, slatwall can provide a practical and stylish solution for organizing and maximizing space in your garage.



RETAIL & COMMERCIAL

Versatile and practical storage solution that can provide retailers and commercial businesses with an effective way to organize, display, and manage their products in a way that is both attractive and functional.

A close-up photograph of a wall featuring large, vertical wood-grain panels. Two horizontal aluminum trim rails are mounted across the panels, secured with small metal brackets. The background is a plain, light-colored wall.

EASY PANEL SYSTEMS

Convenient and cost-effective aluminum trim for wall panels Offering panel fabricators the flexibility to manufacture their own wall panels and then choose from a variety of off the shelf, popular aluminum trim options.

FEATURES & BENEFITS

COMPATIBLE WITH 3/4", 1/2" AND 3/8" PANELS

INTUITIVE INSTALLATION CENTERED AROUND MONARCH Z CLIPS

CLOSE TO 100 DIFFERENT AESTHETICS POSSIBLE

OFF THE SHELF SHIPPING FOR FAST LEAD TIMES

COMPATIBLE WITH 3M DUAL LOCK



VISIT [MONARCHMETAL.COM](https://monarchmetal.com) FOR A COMPLETE LIST OF
PROFILES, EDGE TRIM & CORNER OPTIONS, AND ACCESSORIES

CLADDING CONCEALED SYSTEMS

Providing the best-in-class cladding installation solutions, thermally isolated wall brackets, they are easy to install and made in the United States. Fabricated from strong 6061 T6 aluminum, our wall brackets work universally with metal studs, wood, and concrete masonry units (CMU).



Standard Rail & Brackets

MFSTR-LW1250

For concealed anchor installations
using TBD!!!!!!



Heavy Duty Rail & Bracket

MFSTR-1125

Concealed anchor façade
installaion for heavy panels



Honeycomb Rail & Bracket System

MFSTR-DNRail

Fastening system to securely
install honeycomb panels in
ventilated rain screen applications



Undercut Anchor Rail & Brackets (Keil)

MFSTR-UCRail

For concealed anchor installations
using Keil Undercut Anchors



Rail & Bracket for HPL Phenolic Panels

200-000-RAIL

Concealed anchor installations
for HPL Phenolic Panels requiring
NFPA 285 rating.



Rail & Bracket for Lightweight Panels

MHPL

Concealed fastener rail and
bracket for lightweight panel
systems

PURA[®] NFC

BY TRESPA

TRESPA PURA NFC SYSTEM

our new system simplifies the installation of Trespa Pura by eliminating the typical 1x wood furring strips, and EPDM strips, common with typical installation systems.

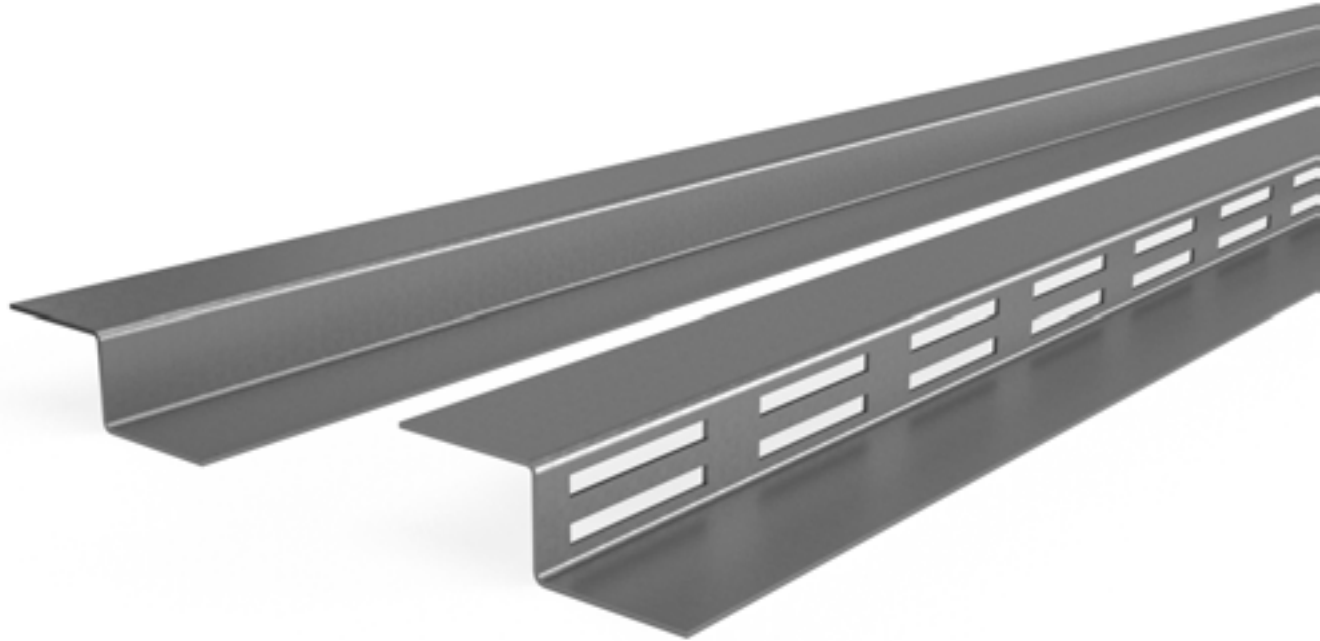
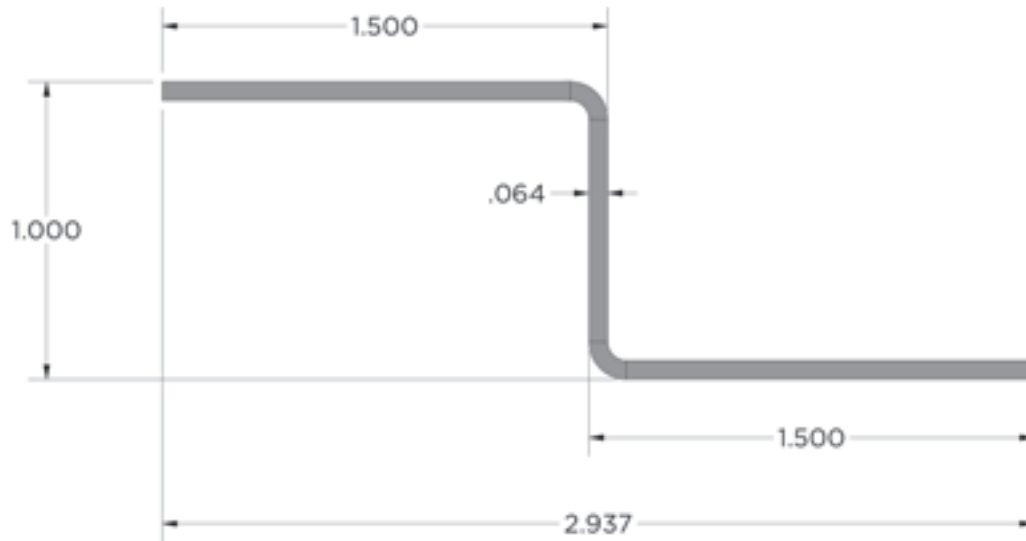


① MFTP - Clip

② MFTPSR - Starter Rail

STOCK Z GIRTS

Our Z Girts are an extremely versatile cladding support component, and can be used behind almost any cladding system. These gauges of Zees are typically used in exterior applications, but can also be used in interior applications, where a heavier duty panel, or more durable support system is required.



AVAILABLE OPTIONS

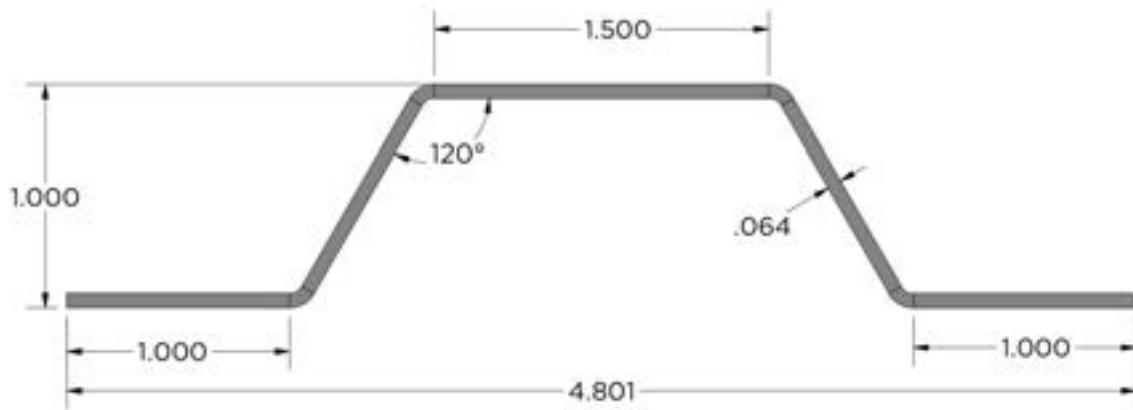
18GA OR 16GA

SOLID OR VENTED

96", 120", 144" OR CUSTOM LENGTHS

STOCK HAT CHANNELS

Our hat channels are an extremely versatile cladding support component, and can be used behind almost any cladding system. These gauges of hat channels are typically used in exterior applications, but can also be used in interior applications, where a heavier duty panel, or more durable support system is required.



AVAILABLE OPTIONS

18GA OR 16GA

SOLID OR VENTED

96", 120", 144" OR CUSTOM LENGTHS

WALL BRACKETS

Providing the best-in-class cladding installation solutions, thermally isolated wall brackets from Monarch Metal Inc. are easy to install and made in the United States. Fabricated from strong 6061 T6 aluminum, our wall brackets work universally with metal studs, wood, and concrete masonry units (CMU).



HORIZONTAL WALL BRACKET



VERTICAL WALL BRACKET



CUSTOM EXTRUSION REQUESTS

We can help you develop a new custom extrusion to meet your needs. Extrusions can be designed to reduce the number of components needed, increase assembly speed, and add value.

OUR PROCESS

Review Customer Materials
Develop Initial Ideas and Plans
Customer Consultation Meeting
Design and Development of Product(s)
Prototyping as Needed
3D Printed Samples as Needed
Cost Estimate Delivered to Customer
Tooling Ordered
Extrusions Delivered

FOR INFO, EMAIL US
engineering@monarchmetal.com

NEVADA | NEW YORK | TEXAS



www.monarchmetal.com
(631) 743-8030