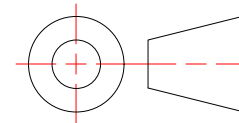


<b>Created By:</b> amh	<b>Approved By:</b>	<b>Sheet Size</b> A	<b>Sheet No.</b> 1/12
<b>Creation Date:</b> 3/31/2026	<b>Approval Date:</b>	<b>Scale</b> 5 : 1	<b>Rev</b>



**FA-.125x.5x48-N**  
Stock Flat Bar - No Holes

Weight: 0.293 lbmass  
Aluminum 6063-T6  
Finish: Clear Anodized



**MONARCH**  
METAL INC.

**PROPRIETARY AND CONFIDENTIAL**

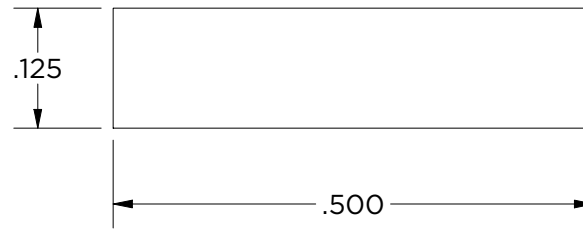
THE INFORMATION CONTAINED IN THIS DRAWING IS THE SOLE PROPERTY OF MONARCH METAL FABRICATION. ANY REPRODUCTION IN PART OR AS A WHOLE WITHOUT THE WRITTEN PERMISSION OF MONARCH METAL INC. IS PROHIBITED.

**New York**  
1700 Ocean Ave Suite 2  
Ronkonkoma NY 11779  
Phone: (631) 750-3000

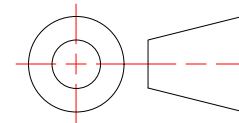
**Nevada**  
1080 Linda Way, Unit 10  
Sparks, NV 89431  
Phone: (775) 415-0100

**Texas**  
1330 Post & Paddock St.,  
Suite 100  
Grand Prairie, TX 75050  
(945) 202-2700

monarchmetal.com



<b>Created By:</b> amh	<b>Approved By:</b>	<b>Sheet Size</b> A	<b>Sheet No.</b> 2/12
<b>Creation Date:</b> 3/31/2026	<b>Approval Date:</b>	<b>Scale</b> 5 : 1	<b>Rev</b>



**FA-.125x.5x96-N**  
Stock Flat Bar - No Holes

Weight: 0.585 lbmass  
Aluminum 6063-T6  
Finish: Clear Anodized



**MONARCH**  
METAL INC.

**PROPRIETARY AND CONFIDENTIAL**

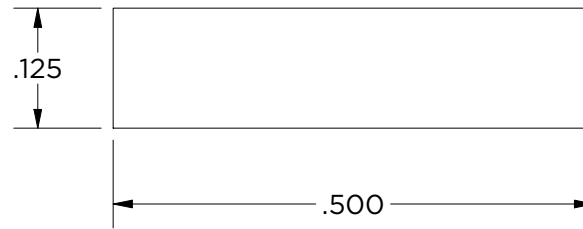
THE INFORMATION CONTAINED IN THIS DRAWING IS THE SOLE PROPERTY OF MONARCH METAL FABRICATION. ANY REPRODUCTION IN PART OR AS A WHOLE WITHOUT THE WRITTEN PERMISSION OF MONARCH METAL INC. IS PROHIBITED.

**New York**  
1700 Ocean Ave Suite 2  
Ronkonkoma NY 11779  
Phone: (631) 750-3000

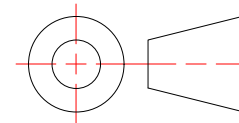
**Nevada**  
1080 Linda Way, Unit 10  
Sparks, NV 89431  
Phone: (775) 415-0100

**Texas**  
1330 Post & Paddock St.,  
Suite 100  
Grand Prairie, TX 75050  
(945) 202-2700

monarchmetal.com



<b>Created By:</b> amh	<b>Approved By:</b>	<b>Sheet Size</b> A	<b>Sheet No.</b> 3/12
<b>Creation Date:</b> 3/31/2026	<b>Approval Date:</b>	<b>Scale</b> 5 : 1	<b>Rev</b>



**FA-.125x.5x192-N**

Stock Flat Bar - No Holes

Weight: 1.170 lbmass

Aluminum 6063-T6

Finish: Clear Anodized



**MONARCH**  
METAL INC.

**PROPRIETARY AND CONFIDENTIAL**

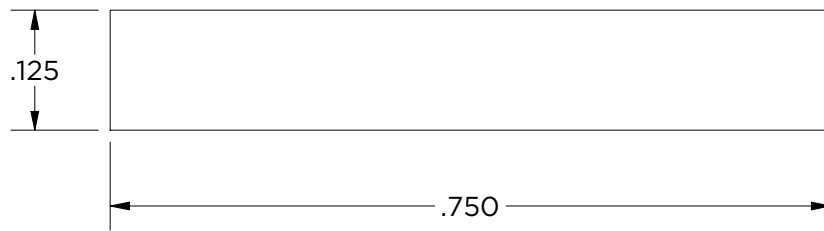
THE INFORMATION CONTAINED IN THIS DRAWING IS THE SOLE PROPERTY OF MONARCH METAL FABRICATION. ANY REPRODUCTION IN PART OR AS A WHOLE WITHOUT THE WRITTEN PERMISSION OF MONARCH METAL INC. IS PROHIBITED.

**New York**  
1700 Ocean Ave Suite 2  
Ronkonkoma NY 11779  
Phone: (631) 750-3000

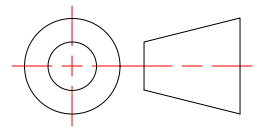
**Nevada**  
1080 Linda Way, Unit 10  
Sparks, NV 89431  
Phone: (775) 415-0100

**Texas**  
1330 Post & Paddock St.,  
Suite 100  
Grand Prairie, TX 75050  
(945) 202-2700

monarchmetal.com



<b>Created By:</b> amh	<b>Approved By:</b>	<b>Sheet Size</b> A	<b>Sheet No.</b> 4/12
<b>Creation Date:</b> 3/31/2026	<b>Approval Date:</b>	<b>Scale</b> 5 : 1	<b>Rev</b>



**FA-.125x.75x48-N**  
Stock Flat Bar - No Holes

Weight: 0.439 lbmass  
Aluminum 6063-T6  
Finish: Clear Anodized

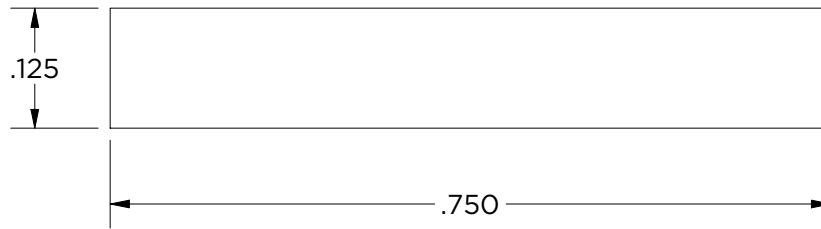


**MONARCH**  
METAL INC.

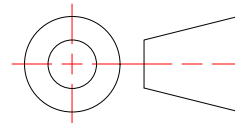
**PROPRIETARY AND CONFIDENTIAL**  
THE INFORMATION CONTAINED IN THIS DRAWING IS THE SOLE PROPERTY OF MONARCH METAL FABRICATION. ANY REPRODUCTION IN PART OR AS A WHOLE WITHOUT THE WRITTEN PERMISSION OF MONARCH METAL INC. IS PROHIBITED.

<b>New York</b> 1700 Ocean Ave Suite 2 Ronkonkoma NY 11779 Phone: (631) 750-3000	<b>Nevada</b> 1080 Linda Way, Unit 10 Sparks, NV 89431 Phone: (775) 415-0100	<b>Texas</b> 1330 Post & Paddock St., Suite 100 Grand Prairie, TX 75050 (945) 202-2700
---	---	--

monarchmetal.com



<b>Created By:</b> amh	<b>Approved By:</b>	<b>Sheet Size</b> A	<b>Sheet No.</b> 5/12
<b>Creation Date:</b> 3/31/2026	<b>Approval Date:</b>	<b>Scale</b> 5 : 1	<b>Rev</b>



**FA-.125x.75x96-N**  
Stock Flat Bar - No Holes

Weight: 0.878 lbmass  
Aluminum 6063-T6  
Finish: Clear Anodized



**MONARCH**  
METAL INC.

**PROPRIETARY AND CONFIDENTIAL**

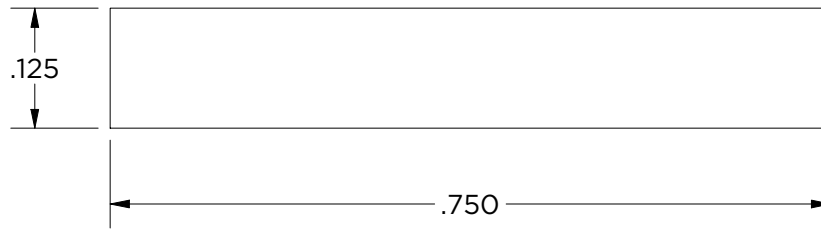
THE INFORMATION CONTAINED IN THIS DRAWING IS THE SOLE PROPERTY OF MONARCH METAL FABRICATION. ANY REPRODUCTION IN PART OR AS A WHOLE WITHOUT THE WRITTEN PERMISSION OF MONARCH METAL INC. IS PROHIBITED.

**New York**  
1700 Ocean Ave Suite 2  
Ronkonkoma NY 11779  
Phone: (631) 750-3000

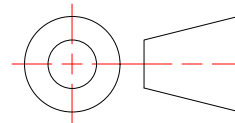
**Nevada**  
1080 Linda Way, Unit 10  
Sparks, NV 89431  
Phone: (775) 415-0100

**Texas**  
1330 Post & Paddock St.,  
Suite 100  
Grand Prairie, TX 75050  
(945) 202-2700

monarchmetal.com



<b>Created By:</b> amh	<b>Approved By:</b>	<b>Sheet Size</b> A	<b>Sheet No.</b> 6/12
<b>Creation Date:</b> 3/31/2026	<b>Approval Date:</b>	<b>Scale</b> 5 : 1	<b>Rev</b>



**FA-.125x.75x192-N**  
Stock Flat Bar - No Holes

Weight: 1.755 lbmass  
Aluminum 6063-T6  
Finish: Clear Anodized



**MONARCH**  
METAL INC.

**PROPRIETARY AND CONFIDENTIAL**

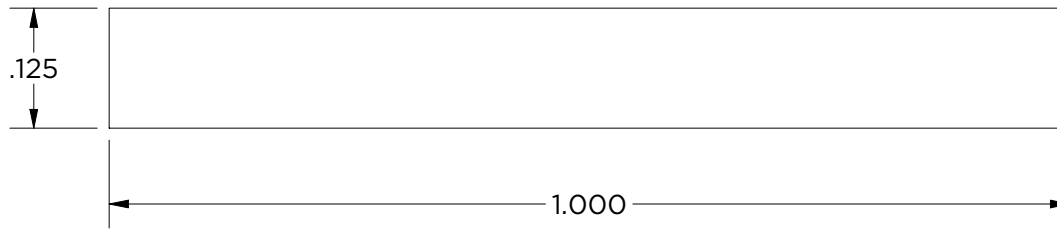
THE INFORMATION CONTAINED IN THIS DRAWING IS THE SOLE PROPERTY OF MONARCH METAL FABRICATION. ANY REPRODUCTION IN PART OR AS A WHOLE WITHOUT THE WRITTEN PERMISSION OF MONARCH METAL INC. IS PROHIBITED.

**New York**  
1700 Ocean Ave Suite 2  
Ronkonkoma NY 11779  
Phone: (631) 750-3000

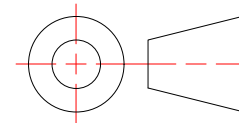
**Nevada**  
1080 Linda Way, Unit 10  
Sparks, NV 89431  
Phone: (775) 415-0100

**Texas**  
1330 Post & Paddock St.,  
Suite 100  
Grand Prairie, TX 75050  
(945) 202-2700

monarchmetal.com



<b>Created By:</b> amh	<b>Approved By:</b>	<b>Sheet Size</b> A	<b>Sheet No.</b> 7/12
<b>Creation Date:</b> 3/31/2026	<b>Approval Date:</b>	<b>Scale</b> 5 : 1	<b>Rev</b>



**FA-.125x1x48-N**  
Stock Flat Bar - No Holes

Weight: 0.585 lbmass  
Aluminum 6063-T6  
Finish: Clear Anodized



**MONARCH**  
METAL INC.

**PROPRIETARY AND CONFIDENTIAL**

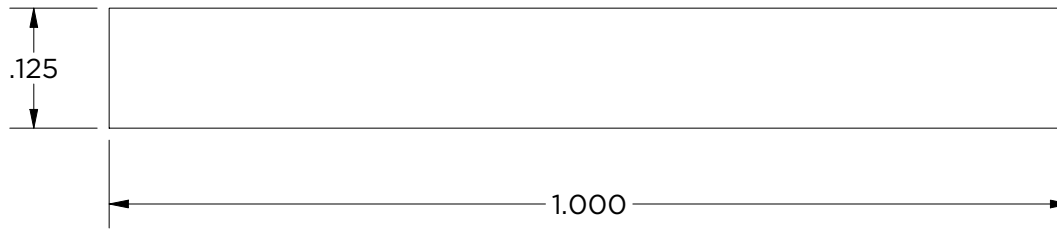
THE INFORMATION CONTAINED IN THIS DRAWING IS THE SOLE PROPERTY OF MONARCH METAL FABRICATION. ANY REPRODUCTION IN PART OR AS A WHOLE WITHOUT THE WRITTEN PERMISSION OF MONARCH METAL INC. IS PROHIBITED.

**New York**  
1700 Ocean Ave Suite 2  
Ronkonkoma NY 11779  
Phone: (631) 750-3000

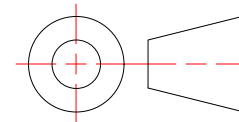
**Nevada**  
1080 Linda Way, Unit 10  
Sparks, NV 89431  
Phone: (775) 415-0100

**Texas**  
1330 Post & Paddock St.,  
Suite 100  
Grand Prairie, TX 75050  
(945) 202-2700

monarchmetal.com



<b>Created By:</b> amh	<b>Approved By:</b>	<b>Sheet Size</b> A	<b>Sheet No.</b> 8/12
<b>Creation Date:</b> 3/31/2026	<b>Approval Date:</b>	<b>Scale</b> 5 : 1	<b>Rev</b>



**FA-.125x1x96-N**  
Stock Flat Bar - No Holes

Weight: 1.170 lbmass  
Aluminum 6063-T6  
Finish: Clear Anodized



**MONARCH**  
METAL INC.

**PROPRIETARY AND CONFIDENTIAL**

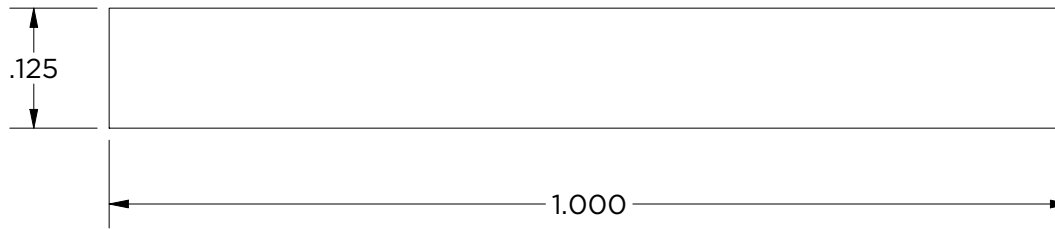
THE INFORMATION CONTAINED IN THIS DRAWING IS THE SOLE PROPERTY OF MONARCH METAL FABRICATION. ANY REPRODUCTION IN PART OR AS A WHOLE WITHOUT THE WRITTEN PERMISSION OF MONARCH METAL INC. IS PROHIBITED.

**New York**  
1700 Ocean Ave Suite 2  
Ronkonkoma NY 11779  
Phone: (631) 750-3000

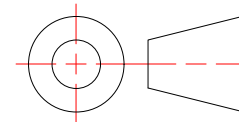
**Nevada**  
1080 Linda Way, Unit 10  
Sparks, NV 89431  
Phone: (775) 415-0100

**Texas**  
1330 Post & Paddock St.,  
Suite 100  
Grand Prairie, TX 75050  
(945) 202-2700

monarchmetal.com



<b>Created By:</b> amh	<b>Approved By:</b>	<b>Sheet Size</b> A	<b>Sheet No.</b> 9/12
<b>Creation Date:</b> 3/31/2026	<b>Approval Date:</b>	<b>Scale</b> 5 : 1	<b>Rev</b>



**FA-.125x1x192-N**

Stock Flat Bar - No Holes

Weight: 2.340 lbmass  
Aluminum 6063-T6  
Finish: Clear Anodized



**MONARCH**  
METAL INC.

**PROPRIETARY AND CONFIDENTIAL**

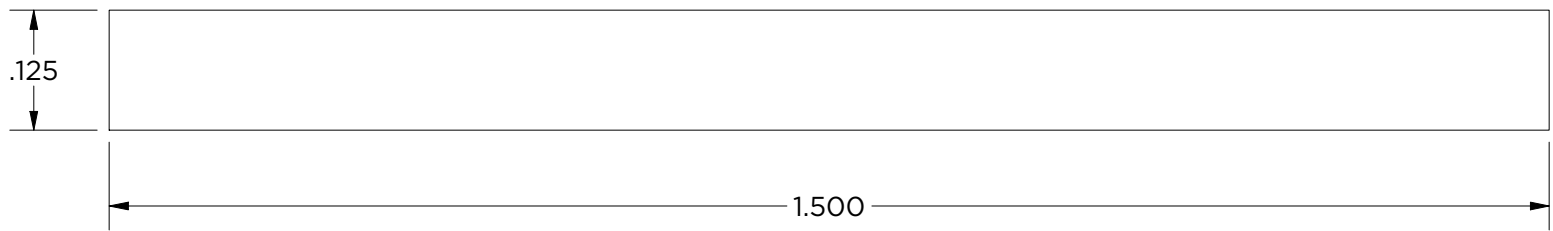
THE INFORMATION CONTAINED IN THIS DRAWING IS THE SOLE PROPERTY OF MONARCH METAL FABRICATION. ANY REPRODUCTION IN PART OR AS A WHOLE WITHOUT THE WRITTEN PERMISSION OF MONARCH METAL INC. IS PROHIBITED.

**New York**  
1700 Ocean Ave Suite 2  
Ronkonkoma NY 11779  
Phone: (631) 750-3000

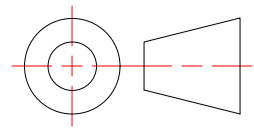
**Nevada**  
1080 Linda Way, Unit 10  
Sparks, NV 89431  
Phone: (775) 415-0100

**Texas**  
1330 Post & Paddock St.,  
Suite 100  
Grand Prairie, TX 75050  
(945) 202-2700

monarchmetal.com



<b>Created By:</b> amh	<b>Approved By:</b>	<b>Sheet Size</b> A	<b>Sheet No.</b> 10/12
<b>Creation Date:</b> 3/31/2026	<b>Approval Date:</b>	<b>Scale</b> 5 : 1	<b>Rev</b>



**FA-.125x1.5x48-N**  
Stock Flat Bar - No Holes

Weight: 0.878 lbmass  
Aluminum 6063-T6  
Finish: Clear Anodized

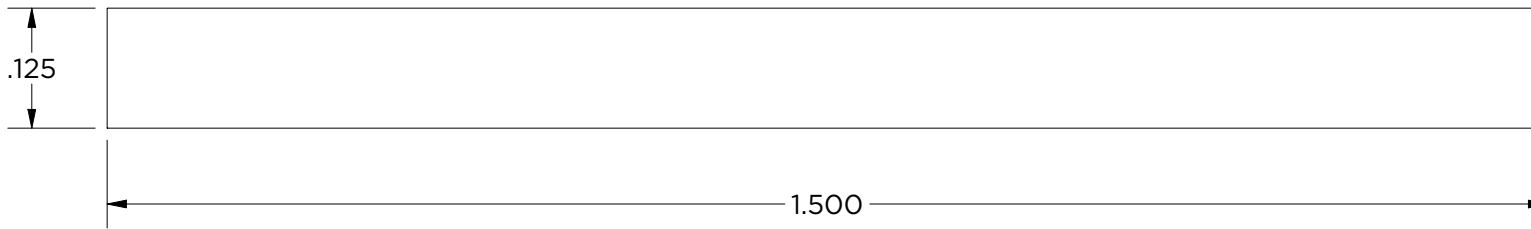


**MONARCH**  
METAL INC.

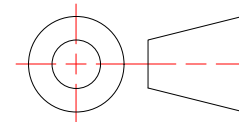
**PROPRIETARY AND CONFIDENTIAL**  
THE INFORMATION CONTAINED IN THIS DRAWING IS THE SOLE PROPERTY OF MONARCH METAL FABRICATION. ANY REPRODUCTION IN PART OR AS A WHOLE WITHOUT THE WRITTEN PERMISSION OF MONARCH METAL INC. IS PROHIBITED.

<b>New York</b> 1700 Ocean Ave Suite 2 Ronkonkoma NY 11779 Phone: (631) 750-3000	<b>Nevada</b> 1080 Linda Way, Unit 10 Sparks, NV 89431 Phone: (775) 415-0100	<b>Texas</b> 1330 Post & Paddock St., Suite 100 Grand Prairie, TX 75050 (945) 202-2700
---	---	--

monarchmetal.com



<b>Created By:</b> amh	<b>Approved By:</b>	<b>Sheet Size</b> A	<b>Sheet No.</b> 11/12
<b>Creation Date:</b> 3/31/2026	<b>Approval Date:</b>	<b>Scale</b> 5 : 1	<b>Rev</b>



**FA-.125x1.5x96-N**  
Stock Flat Bar - No Holes

Weight: 1.755 lbmass  
Aluminum 6063-T6  
Finish: Clear Anodized



**MONARCH**  
METAL INC.

**PROPRIETARY AND CONFIDENTIAL**

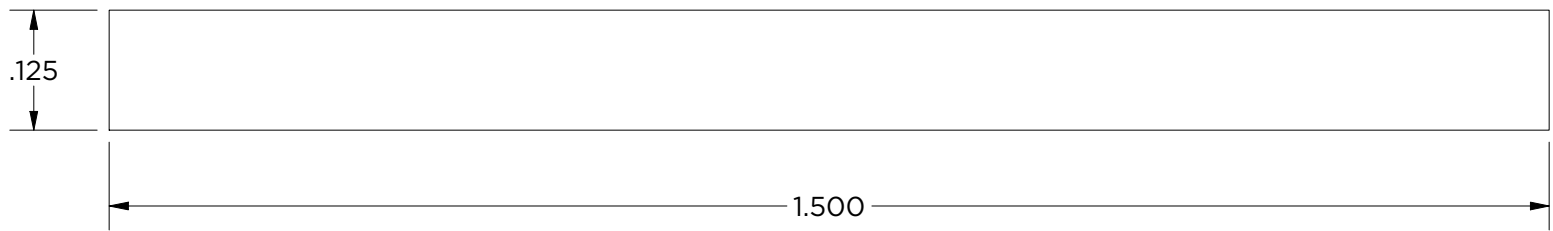
THE INFORMATION CONTAINED IN THIS DRAWING IS THE SOLE PROPERTY OF MONARCH METAL FABRICATION. ANY REPRODUCTION IN PART OR AS A WHOLE WITHOUT THE WRITTEN PERMISSION OF MONARCH METAL INC. IS PROHIBITED.

**New York**  
1700 Ocean Ave Suite 2  
Ronkonkoma NY 11779  
Phone: (631) 750-3000

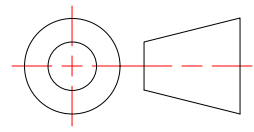
**Nevada**  
1080 Linda Way, Unit 10  
Sparks, NV 89431  
Phone: (775) 415-0100

**Texas**  
1330 Post & Paddock St.,  
Suite 100  
Grand Prairie, TX 75050  
(945) 202-2700

monarchmetal.com



<b>Created By:</b> amh	<b>Approved By:</b>	<b>Sheet Size</b> A	<b>Sheet No.</b> 12/12
<b>Creation Date:</b> 3/31/2026	<b>Approval Date:</b>	<b>Scale</b> 5 : 1	<b>Rev</b>



**FA-.125x1.5x192-N**  
Stock Flat Bar - No Holes

Weight: 3.510 lbmass  
Aluminum 6063-T6  
Finish: Clear Anodized



**MONARCH**  
METAL INC.

**PROPRIETARY AND CONFIDENTIAL**  
THE INFORMATION CONTAINED IN THIS DRAWING IS THE SOLE PROPERTY OF MONARCH METAL FABRICATION. ANY REPRODUCTION IN PART OR AS A WHOLE WITHOUT THE WRITTEN PERMISSION OF MONARCH METAL INC. IS PROHIBITED.

<b>New York</b> 1700 Ocean Ave Suite 2 Ronkonkoma NY 11779 Phone: (631) 750-3000	<b>Nevada</b> 1080 Linda Way, Unit 10 Sparks, NV 89431 Phone: (775) 415-0100	<b>Texas</b> 1330 Post & Paddock St., Suite 100 Grand Prairie, TX 75050 (945) 202-2700
---	---	--

monarchmetal.com