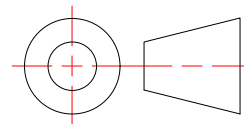


| | | | |
|------------------------------------|-----------------------|------------------------|--------------------------|
| Created By: amh | Approved By: | Sheet Size A | Sheet No. 1/15 |
| Creation Date: 10/2/2024 | Approval Date: | Scale 3 : 1 | Rev |



LA-.75x.75x.125x48-N
Stock Angle - No Holes

Weight: 0.804 lbmass
Aluminum 6063-T6
Finish: Clear Anodized



MONARCH
METAL INC.

PROPRIETARY AND CONFIDENTIAL

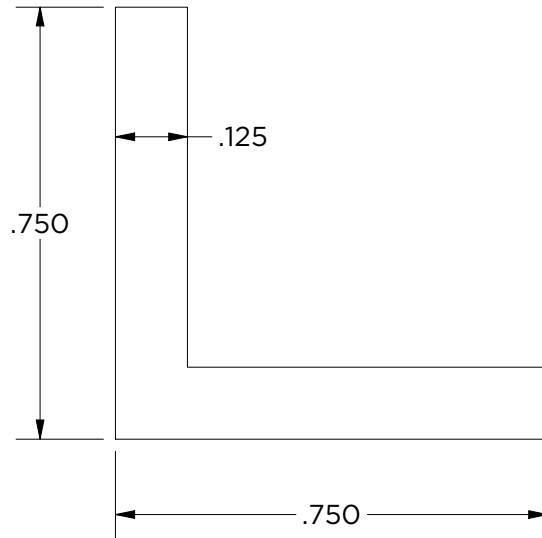
THE INFORMATION CONTAINED IN THIS DRAWING IS THE SOLE PROPERTY OF MONARCH METAL FABRICATION. ANY REPRODUCTION IN PART OR AS A WHOLE WITHOUT THE WRITTEN PERMISSION OF MONARCH METAL INC. IS PROHIBITED.

New York
1700 Ocean Ave Suite 2
Ronkonkoma NY 11779
Phone: (631) 750-3000

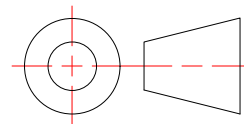
Nevada
1080 Linda Way, Unit 10
Sparks, NV 89431
Phone: (775) 415-0100

Texas
1330 Post & Paddock St.,
Suite 100
Grand Prairie, TX 75050
(945) 202-2700

monarchmetal.com



| | | | |
|------------------------------------|-----------------------|------------------------|--------------------------|
| Created By: amh | Approved By: | Sheet Size A | Sheet No. 2/15 |
| Creation Date: 10/2/2024 | Approval Date: | Scale 3 : 1 | Rev |



LA-.75x.75x.125x96-N
Stock Angle - No Holes

Weight: 1.609 lbmass
Aluminum 6063-T6
Finish: Clear Anodized



MONARCH
METAL INC.

PROPRIETARY AND CONFIDENTIAL

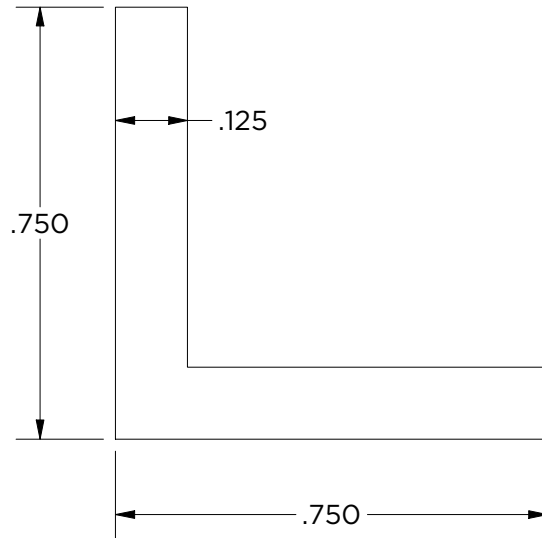
THE INFORMATION CONTAINED IN THIS DRAWING IS THE SOLE PROPERTY OF MONARCH METAL FABRICATION. ANY REPRODUCTION IN PART OR AS A WHOLE WITHOUT THE WRITTEN PERMISSION OF MONARCH METAL INC. IS PROHIBITED.

New York
1700 Ocean Ave Suite 2
Ronkonkoma NY 11779
Phone: (631) 750-3000

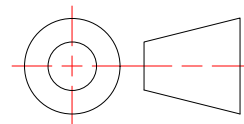
Nevada
1080 Linda Way, Unit 10
Sparks, NV 89431
Phone: (775) 415-0100

Texas
1330 Post & Paddock St.,
Suite 100
Grand Prairie, TX 75050
(945) 202-2700

monarchmetal.com



| | | | |
|------------------------------------|-----------------------|------------------------|--------------------------|
| Created By: amh | Approved By: | Sheet Size A | Sheet No. 3/15 |
| Creation Date: 10/2/2024 | Approval Date: | Scale 3 : 1 | Rev |



LA-.75x.75x.125x192-N
Stock Angle - No Holes

Weight: 3.218 lbmass
Aluminum 6063-T6
Finish: Clear Anodized



MONARCH
METAL INC.

PROPRIETARY AND CONFIDENTIAL

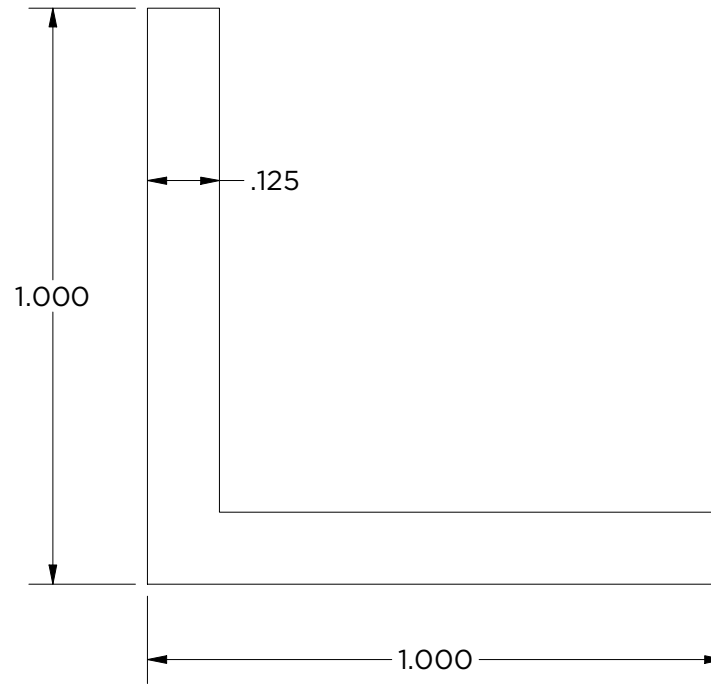
THE INFORMATION CONTAINED IN THIS DRAWING IS THE SOLE PROPERTY OF MONARCH METAL FABRICATION. ANY REPRODUCTION IN PART OR AS A WHOLE WITHOUT THE WRITTEN PERMISSION OF MONARCH METAL INC. IS PROHIBITED.

New York
1700 Ocean Ave Suite 2
Ronkonkoma NY 11779
Phone: (631) 750-3000

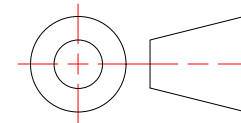
Nevada
1080 Linda Way, Unit 10
Sparks, NV 89431
Phone: (775) 415-0100

Texas
1330 Post & Paddock St.,
Suite 100
Grand Prairie, TX 75050
(945) 202-2700

monarchmetal.com



| | | | |
|------------------------------------|-----------------------|------------------------|--------------------------|
| Created By: amh | Approved By: | Sheet Size A | Sheet No. 4/15 |
| Creation Date: 10/2/2024 | Approval Date: | Scale 3 : 1 | Rev |



LA-1x1x.125x48-N

Stock Angle - No Holes

Weight: 1.097 lbmass

Aluminum 6063-T6

Finish: Clear Anodized



MONARCH
METAL INC.

PROPRIETARY AND CONFIDENTIAL

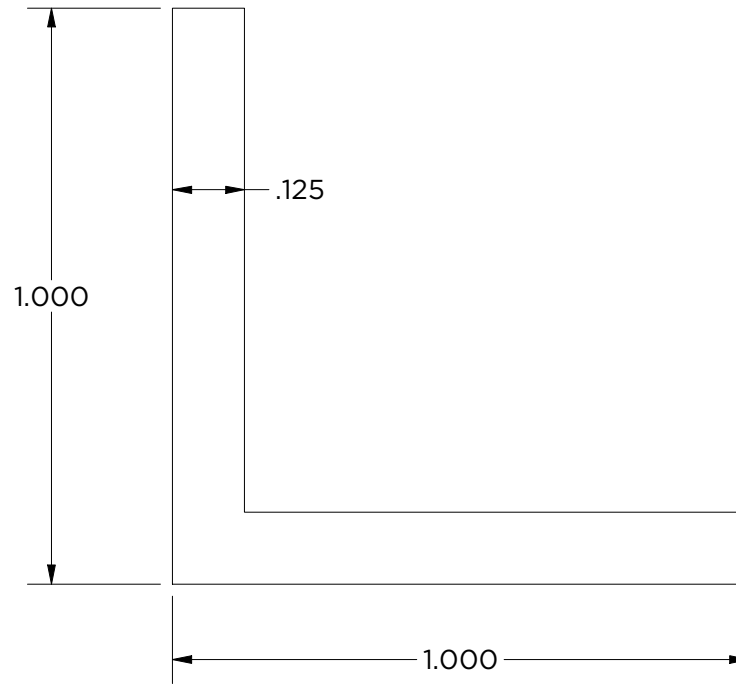
THE INFORMATION CONTAINED IN THIS DRAWING IS THE SOLE PROPERTY OF MONARCH METAL FABRICATION. ANY REPRODUCTION IN PART OR AS A WHOLE WITHOUT THE WRITTEN PERMISSION OF MONARCH METAL INC. IS PROHIBITED.

New York
1700 Ocean Ave Suite 2
Ronkonkoma NY 11779
Phone: (631) 750-3000

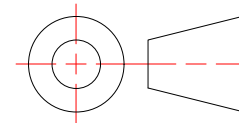
Nevada
1080 Linda Way, Unit 10
Sparks, NV 89431
Phone: (775) 415-0100

Texas
1330 Post & Paddock St.,
Suite 100
Grand Prairie, TX 75050
(945) 202-2700

monarchmetal.com



| | | | |
|------------------------------------|-----------------------|------------------------|--------------------------|
| Created By: amh | Approved By: | Sheet Size A | Sheet No. 5/15 |
| Creation Date: 10/2/2024 | Approval Date: | Scale 3 : 1 | Rev |



LA-1x1x.125x96-N

Stock Angle - No Holes

Weight: 2.194 lbmass

Aluminum 6063-T6

Finish: Clear Anodized



MONARCH
METAL INC.

PROPRIETARY AND CONFIDENTIAL

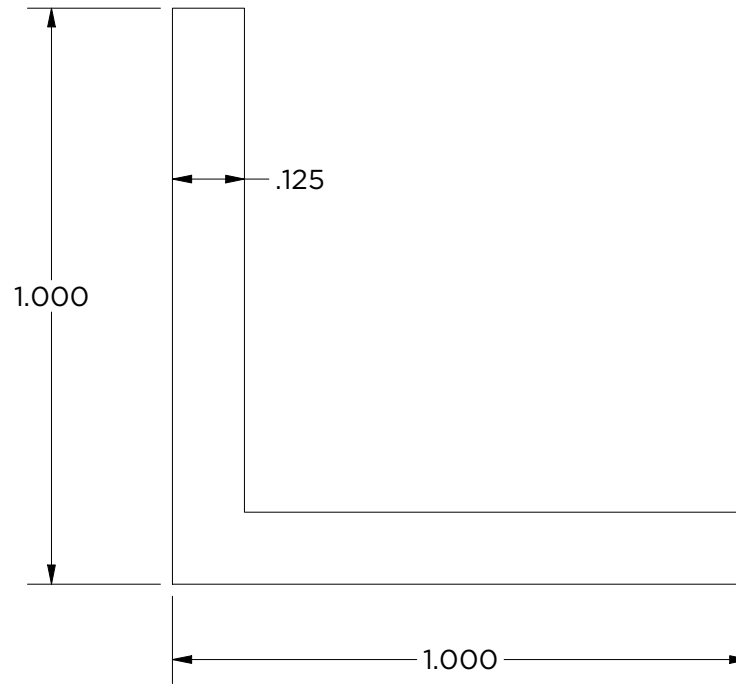
THE INFORMATION CONTAINED IN THIS DRAWING IS THE SOLE PROPERTY OF MONARCH METAL FABRICATION. ANY REPRODUCTION IN PART OR AS A WHOLE WITHOUT THE WRITTEN PERMISSION OF MONARCH METAL INC. IS PROHIBITED.

New York
1700 Ocean Ave Suite 2
Ronkonkoma NY 11779
Phone: (631) 750-3000

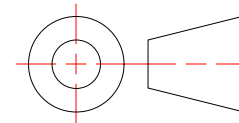
Nevada
1080 Linda Way, Unit 10
Sparks, NV 89431
Phone: (775) 415-0100

Texas
1330 Post & Paddock St.,
Suite 100
Grand Prairie, TX 75050
(945) 202-2700

monarchmetal.com



| | | | |
|------------------------------------|-----------------------|------------------------|--------------------------|
| Created By: amh | Approved By: | Sheet Size A | Sheet No. 6/15 |
| Creation Date: 10/2/2024 | Approval Date: | Scale 3 : 1 | Rev |



LA-1x1x.125x192-N

Stock Angle - No Holes

Weight: 4.388 lbmass
Aluminum 6063-T6
Finish: Clear Anodized



MONARCH
METAL INC.

PROPRIETARY AND CONFIDENTIAL

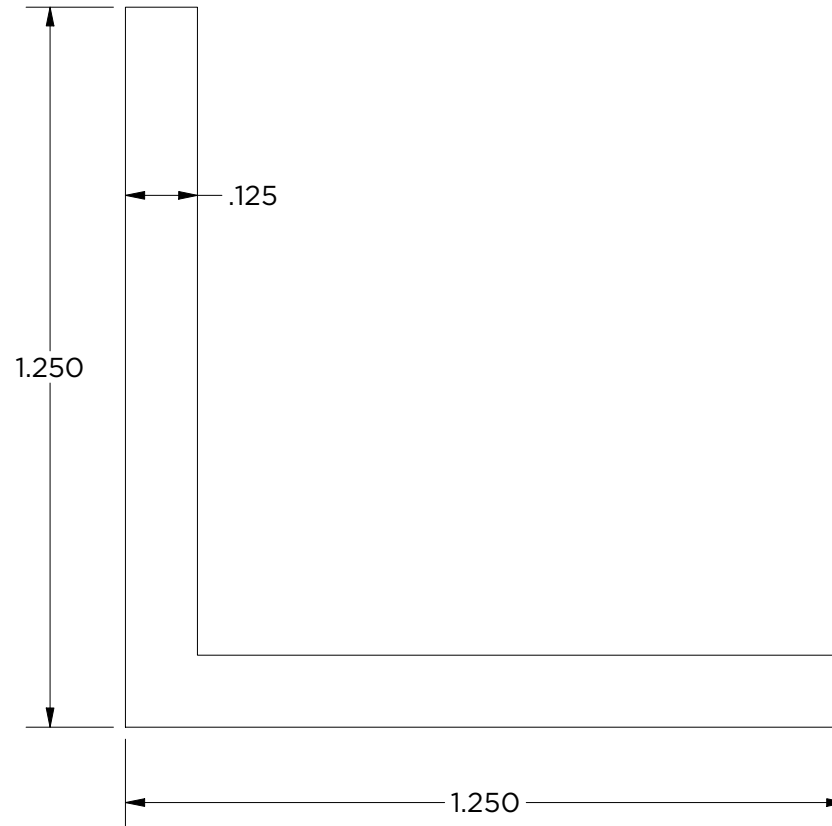
THE INFORMATION CONTAINED IN THIS DRAWING IS THE SOLE PROPERTY OF MONARCH METAL FABRICATION. ANY REPRODUCTION IN PART OR AS A WHOLE WITHOUT THE WRITTEN PERMISSION OF MONARCH METAL INC. IS PROHIBITED.

New York
1700 Ocean Ave Suite 2
Ronkonkoma NY 11779
Phone: (631) 750-3000

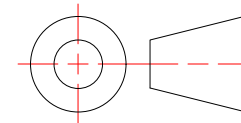
Nevada
1080 Linda Way, Unit 10
Sparks, NV 89431
Phone: (775) 415-0100

Texas
1330 Post & Paddock St.,
Suite 100
Grand Prairie, TX 75050
(945) 202-2700

monarchmetal.com



| | | | |
|------------------------------------|-----------------------|------------------------|--------------------------|
| Created By: amh | Approved By: | Sheet Size A | Sheet No. 7/15 |
| Creation Date: 10/2/2024 | Approval Date: | Scale 3 : 1 | Rev |



LA-1.25x1.25x.125x48-N
Stock Angle - No Holes

Weight: 1.389 lbmass
Aluminum 6063-T6
Finish: Clear Anodized



MONARCH
METAL INC.

PROPRIETARY AND CONFIDENTIAL

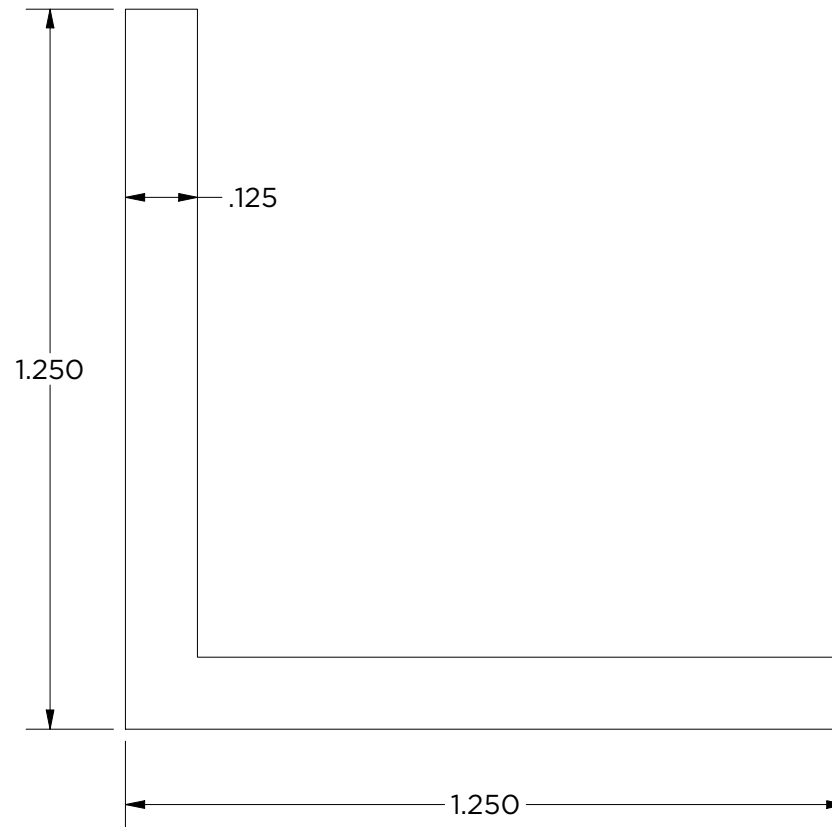
THE INFORMATION CONTAINED IN THIS DRAWING IS THE SOLE PROPERTY OF MONARCH METAL FABRICATION. ANY REPRODUCTION IN PART OR AS A WHOLE WITHOUT THE WRITTEN PERMISSION OF MONARCH METAL INC. IS PROHIBITED.

New York
1700 Ocean Ave Suite 2
Ronkonkoma NY 11779
Phone: (631) 750-3000

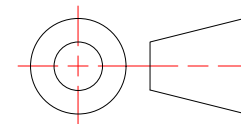
Nevada
1080 Linda Way, Unit 10
Sparks, NV 89431
Phone: (775) 415-0100

Texas
1330 Post & Paddock St.,
Suite 100
Grand Prairie, TX 75050
(945) 202-2700

monarchmetal.com



| | | | |
|------------------------------------|-----------------------|------------------------|--------------------------|
| Created By: amh | Approved By: | Sheet Size A | Sheet No. 8/15 |
| Creation Date: 10/2/2024 | Approval Date: | Scale 3 : 1 | Rev |



LA-1.25x1.25x.125x96-N
Stock Angle - No Holes

Weight: 2.779 lbmass
Aluminum 6063-T6
Finish: Clear Anodized



MONARCH
METAL INC.

PROPRIETARY AND CONFIDENTIAL

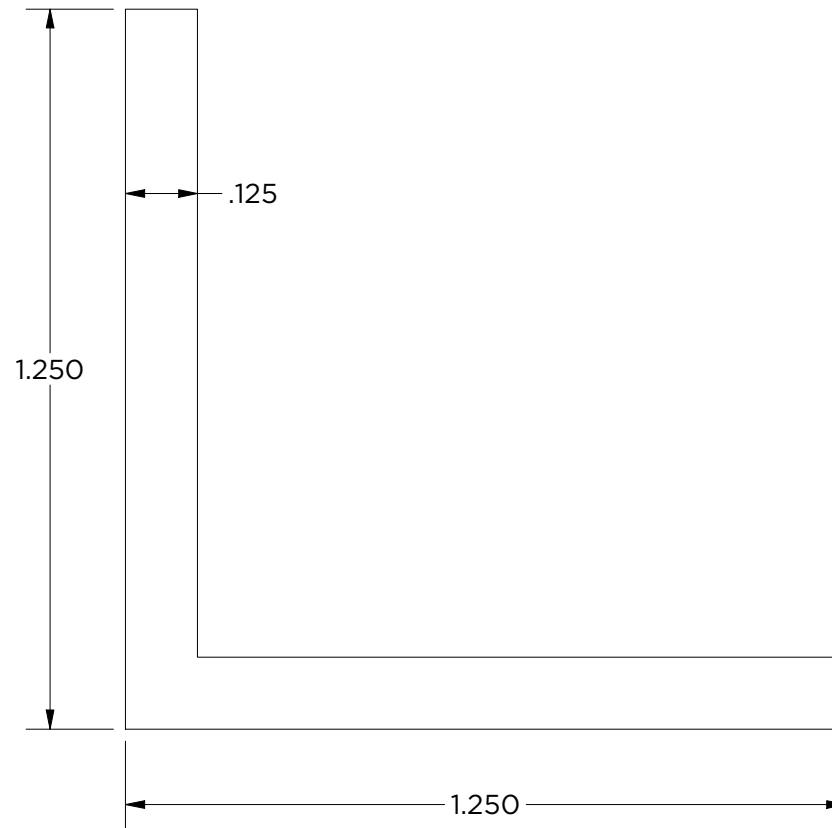
THE INFORMATION CONTAINED IN THIS DRAWING IS THE SOLE PROPERTY OF MONARCH METAL FABRICATION. ANY REPRODUCTION IN PART OR AS A WHOLE WITHOUT THE WRITTEN PERMISSION OF MONARCH METAL INC. IS PROHIBITED.

New York
1700 Ocean Ave Suite 2
Ronkonkoma NY 11779
Phone: (631) 750-3000

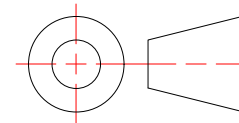
Nevada
1080 Linda Way, Unit 10
Sparks, NV 89431
Phone: (775) 415-0100

Texas
1330 Post & Paddock St.,
Suite 100
Grand Prairie, TX 75050
(945) 202-2700

monarchmetal.com



| | | | |
|------------------------------------|-----------------------|------------------------|--------------------------|
| Created By: amh | Approved By: | Sheet Size A | Sheet No. 9/15 |
| Creation Date: 10/2/2024 | Approval Date: | Scale 3 : 1 | Rev |



LA-1.25x1.25x.125x192-N
Stock Angle - No Holes

Weight: 5.558 lbmass
Aluminum 6063-T6
Finish: Clear Anodized



MONARCH
METAL INC.

PROPRIETARY AND CONFIDENTIAL

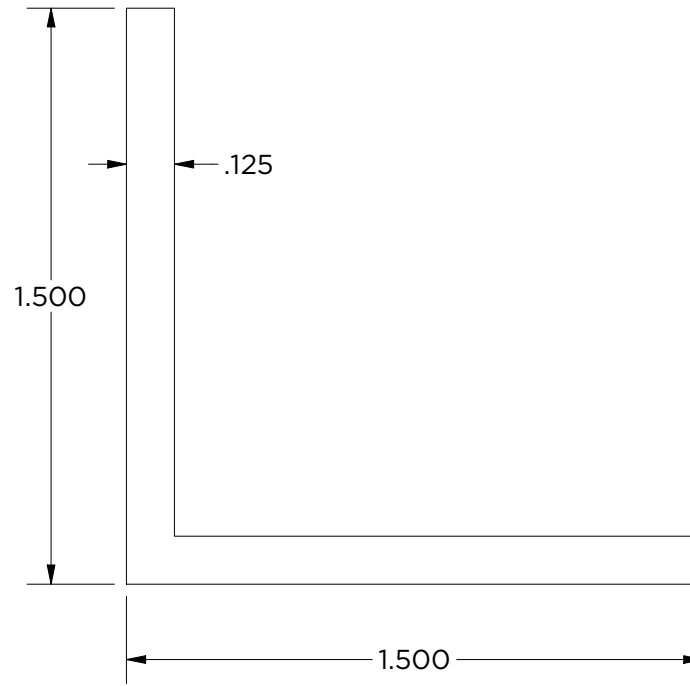
THE INFORMATION CONTAINED IN THIS DRAWING IS THE SOLE PROPERTY OF MONARCH METAL FABRICATION. ANY REPRODUCTION IN PART OR AS A WHOLE WITHOUT THE WRITTEN PERMISSION OF MONARCH METAL INC. IS PROHIBITED.

New York
1700 Ocean Ave Suite 2
Ronkonkoma NY 11779
Phone: (631) 750-3000

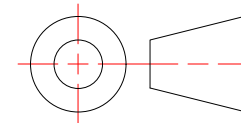
Nevada
1080 Linda Way, Unit 10
Sparks, NV 89431
Phone: (775) 415-0100

Texas
1330 Post & Paddock St.,
Suite 100
Grand Prairie, TX 75050
(945) 202-2700

monarchmetal.com



| | | | |
|------------------------------------|-----------------------|------------------------|---------------------------|
| Created By: amh | Approved By: | Sheet Size A | Sheet No. 10/15 |
| Creation Date: 10/2/2024 | Approval Date: | Scale 2 : 1 | Rev |



LA-1.5x1.5x.125x48-N
Stock Angle - No Holes

Weight: 1.682 lbmass
Aluminum 6063-T6
Finish: Clear Anodized



MONARCH
METAL INC.

PROPRIETARY AND CONFIDENTIAL

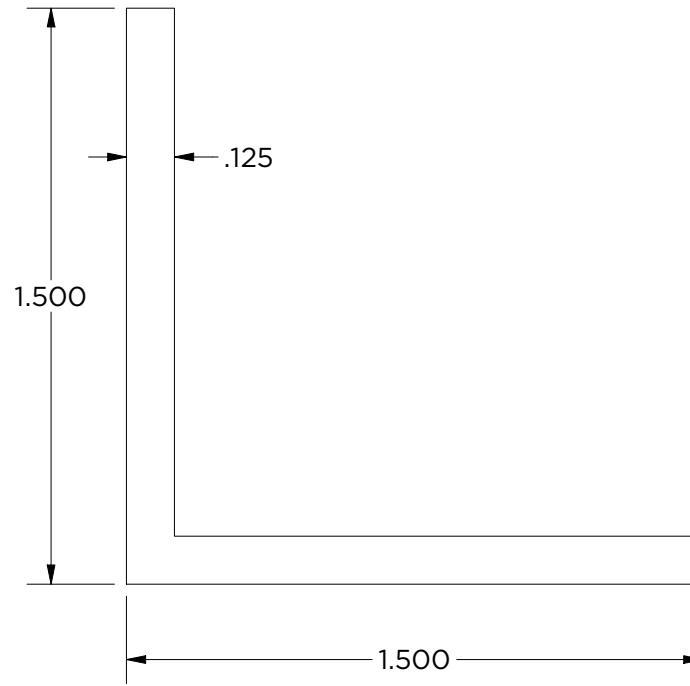
THE INFORMATION CONTAINED IN THIS DRAWING IS THE SOLE PROPERTY OF MONARCH METAL FABRICATION. ANY REPRODUCTION IN PART OR AS A WHOLE WITHOUT THE WRITTEN PERMISSION OF MONARCH METAL INC. IS PROHIBITED.

New York
1700 Ocean Ave Suite 2
Ronkonkoma NY 11779
Phone: (631) 750-3000

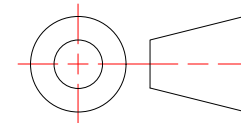
Nevada
1080 Linda Way, Unit 10
Sparks, NV 89431
Phone: (775) 415-0100

Texas
1330 Post & Paddock St.,
Suite 100
Grand Prairie, TX 75050
(945) 202-2700

monarchmetal.com



| | | | |
|------------------------------------|-----------------------|------------------------|---------------------------|
| Created By: amh | Approved By: | Sheet Size A | Sheet No. 11/15 |
| Creation Date: 10/2/2024 | Approval Date: | Scale 2 : 1 | Rev |



LA-1.5x1.5x.125x96-N
Stock Angle - No Holes

Weight: 3.364 lbmass
Aluminum 6063-T6
Finish: Clear Anodized



MONARCH
METAL INC.

PROPRIETARY AND CONFIDENTIAL

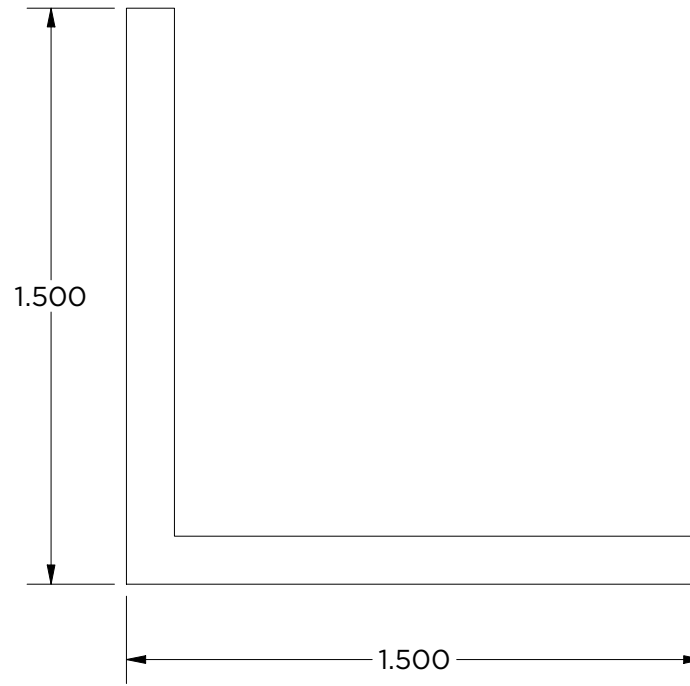
THE INFORMATION CONTAINED IN THIS DRAWING IS THE SOLE PROPERTY OF MONARCH METAL FABRICATION. ANY REPRODUCTION IN PART OR AS A WHOLE WITHOUT THE WRITTEN PERMISSION OF MONARCH METAL INC. IS PROHIBITED.

New York
1700 Ocean Ave Suite 2
Ronkonkoma NY 11779
Phone: (631) 750-3000

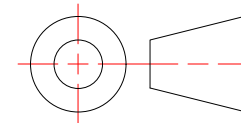
Nevada
1080 Linda Way, Unit 10
Sparks, NV 89431
Phone: (775) 415-0100

Texas
1330 Post & Paddock St.,
Suite 100
Grand Prairie, TX 75050
(945) 202-2700

monarchmetal.com



| | | | |
|------------------------------------|-----------------------|------------------------|---------------------------|
| Created By: amh | Approved By: | Sheet Size A | Sheet No. 12/15 |
| Creation Date: 10/2/2024 | Approval Date: | Scale 2 : 1 | Rev |



LA-1.5x1.5x.125x192-N
Stock Angle - No Holes

Weight: 6.728 lbmass
Aluminum 6063-T6
Finish: Clear Anodized



MONARCH
METAL INC.

PROPRIETARY AND CONFIDENTIAL

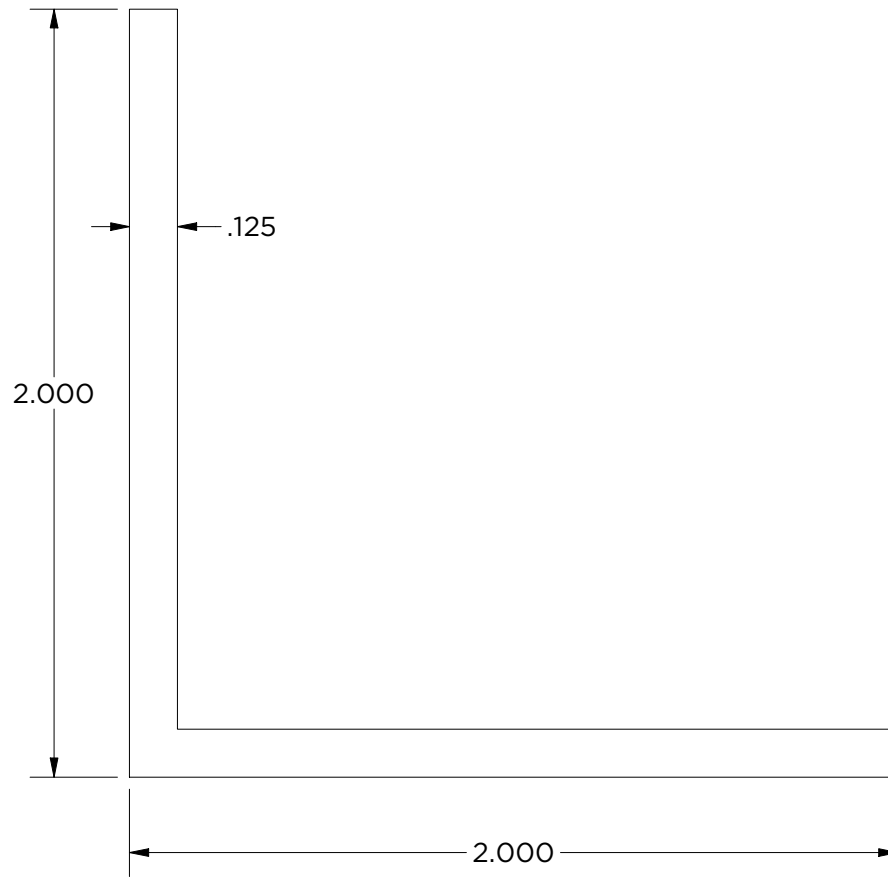
THE INFORMATION CONTAINED IN THIS DRAWING IS THE SOLE PROPERTY OF MONARCH METAL FABRICATION. ANY REPRODUCTION IN PART OR AS A WHOLE WITHOUT THE WRITTEN PERMISSION OF MONARCH METAL INC. IS PROHIBITED.

New York
1700 Ocean Ave Suite 2
Ronkonkoma NY 11779
Phone: (631) 750-3000

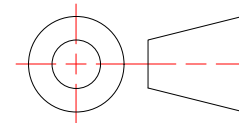
Nevada
1080 Linda Way, Unit 10
Sparks, NV 89431
Phone: (775) 415-0100

Texas
1330 Post & Paddock St.,
Suite 100
Grand Prairie, TX 75050
(945) 202-2700

monarchmetal.com



| | | | |
|------------------------------------|-----------------------|------------------------|---------------------------|
| Created By: amh | Approved By: | Sheet Size A | Sheet No. 13/15 |
| Creation Date: 10/2/2024 | Approval Date: | Scale 2 : 1 | Rev |



LA-2x2x.125x48-N

Stock Angle - No Holes

Weight: 2.267 lbmass

Aluminum 6063-T6

Finish: Clear Anodized



MONARCH
METAL INC.

PROPRIETARY AND CONFIDENTIAL

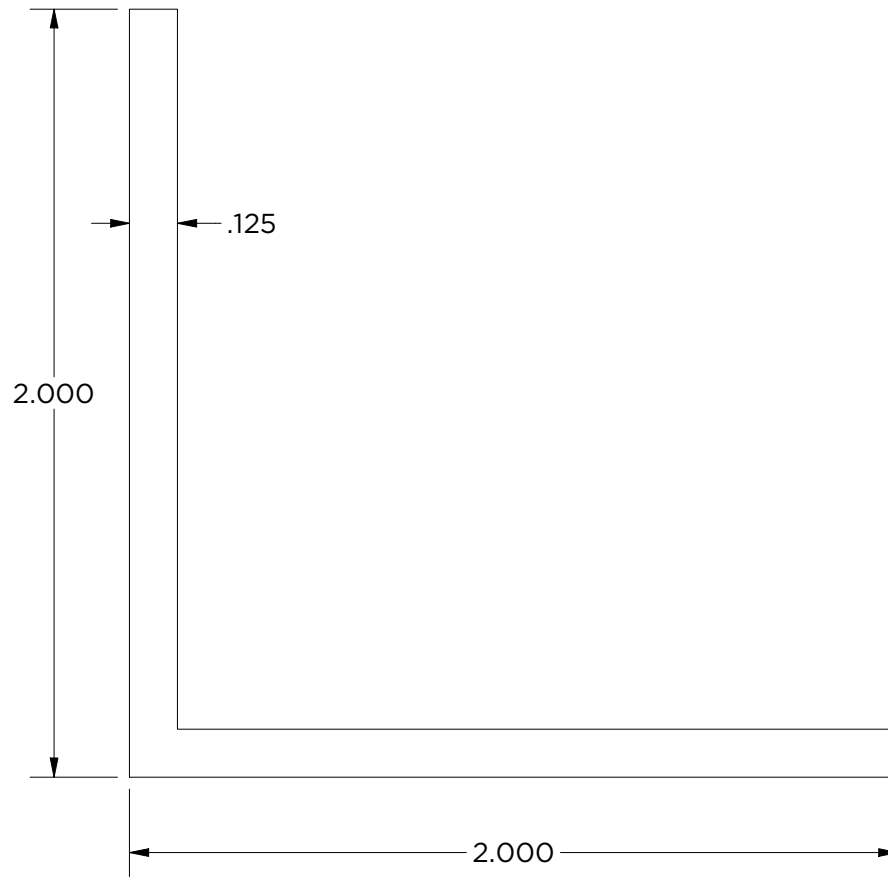
THE INFORMATION CONTAINED IN THIS DRAWING IS THE SOLE PROPERTY OF MONARCH METAL FABRICATION. ANY REPRODUCTION IN PART OR AS A WHOLE WITHOUT THE WRITTEN PERMISSION OF MONARCH METAL INC. IS PROHIBITED.

New York
1700 Ocean Ave Suite 2
Ronkonkoma NY 11779
Phone: (631) 750-3000

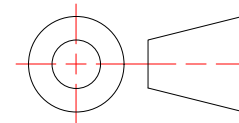
Nevada
1080 Linda Way, Unit 10
Sparks, NV 89431
Phone: (775) 415-0100

Texas
1330 Post & Paddock St.,
Suite 100
Grand Prairie, TX 75050
(945) 202-2700

monarchmetal.com



| | | | |
|------------------------------------|-----------------------|------------------------|---------------------------|
| Created By: amh | Approved By: | Sheet Size A | Sheet No. 14/15 |
| Creation Date: 10/2/2024 | Approval Date: | Scale 2 : 1 | Rev |



LA-2x2x.125x96-N

Stock Angle - No Holes

Weight: 4.534 lbmass
Aluminum 6063-T6
Finish: Clear Anodized



MONARCH
METAL INC.

PROPRIETARY AND CONFIDENTIAL

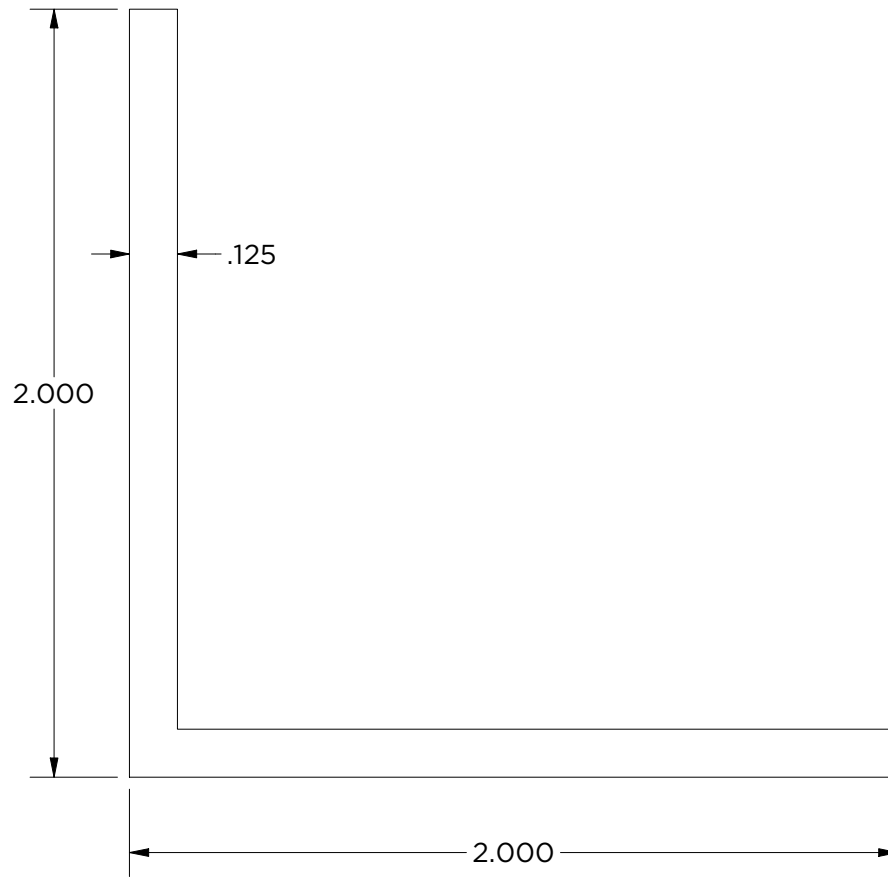
THE INFORMATION CONTAINED IN THIS DRAWING IS THE SOLE PROPERTY OF MONARCH METAL FABRICATION. ANY REPRODUCTION IN PART OR AS A WHOLE WITHOUT THE WRITTEN PERMISSION OF MONARCH METAL INC. IS PROHIBITED.

New York
1700 Ocean Ave Suite 2
Ronkonkoma NY 11779
Phone: (631) 750-3000

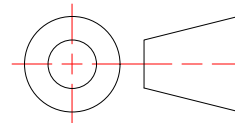
Nevada
1080 Linda Way, Unit 10
Sparks, NV 89431
Phone: (775) 415-0100

Texas
1330 Post & Paddock St.,
Suite 100
Grand Prairie, TX 75050
(945) 202-2700

monarchmetal.com



| | | | |
|------------------------------------|-----------------------|------------------------|---------------------------|
| Created By: amh | Approved By: | Sheet Size A | Sheet No. 15/15 |
| Creation Date: 10/2/2024 | Approval Date: | Scale 2 : 1 | Rev |



LA-2x2x.125x192-N
Stock Angle - No Holes

Weight: 9.068 lbmass
Aluminum 6063-T6
Finish: Clear Anodized



MONARCH
METAL INC.

PROPRIETARY AND CONFIDENTIAL

THE INFORMATION CONTAINED IN THIS DRAWING IS THE SOLE PROPERTY OF MONARCH METAL FABRICATION. ANY REPRODUCTION IN PART OR AS A WHOLE WITHOUT THE WRITTEN PERMISSION OF MONARCH METAL INC. IS PROHIBITED.

New York
1700 Ocean Ave Suite 2
Ronkonkoma NY 11779
Phone: (631) 750-3000

Nevada
1080 Linda Way, Unit 10
Sparks, NV 89431
Phone: (775) 415-0100

Texas
1330 Post & Paddock St.,
Suite 100
Grand Prairie, TX 75050
(945) 202-2700

monarchmetal.com